



South Coast Air Quality Management District



21865 Copley Drive, Diamond Bar, CA 91765-4182
(909) 396-2000 • www.aqmd.gov

NOTICE OF PUBLIC MEETING TO DISCUSS AIR TOXIC RISK FROM A FACILITY IN YOUR NEIGHBORHOOD

State law ensures your right to know about possible health risks from toxic air pollutants emitted by facilities in your neighborhood. South Coast Air Quality District (SCAQMD) regulations require the following facility to notify you:

Facility Name: Quemetco Inc.
Address: 720 South 7th Avenue, City of Industry
Type of Business: Battery Recycling and Secondary Lead Foundry

Even though this facility may be complying with all current air pollution control regulations, some toxic chemicals escape to the air during its normal operations. State law requires the facility to notify all of the people in the area where there is a potential health risk above established thresholds.

Summary of Health Risks Above SCAQMD Thresholds

Toxic air pollutants (primarily arsenic) from Quemetco Inc., may increase the health risks above SCAQMD thresholds for people who live or work in the area shown on the attached "Public Notification Area Map." The potential health risks are highest for those living or working closest to the facility.

- If the facility's 2013 emissions persisted for 30 years, people who live closest to the facility could have an increased risk of getting cancer up to 16 chances in one million.
- If the facility's 2013 emissions persisted for 25 years, people who work closest to the facility may experience long-term non-cancer health risks that are up to 28% higher than SCAQMD thresholds.

This notice is required due to a change in health risk calculation methods rather than from an increase in emissions from Quemetco. As the air pollution control agency for this area, the SCAQMD has prepared the enclosed "Information Sheet" with additional details. Officials from SCAQMD will also conduct a public meeting in the community near Quemetco to answer questions about the toxic chemicals, the potential health risks, and what is being done to reduce toxic emissions. Officials from Quemetco will also attend the meeting to help answer your questions.

PUBLIC MEETING

Date and Time: **June 23, 2016 at 6:00 pm**
Location: **La Puente High School
15615 Nelson Ave East, La Puente, CA 91744**

For more information about SCAQMD programs to control toxic air pollution or the public meeting, contact Ian MacMillan of SCAQMD at (909) 396-3244 or e-mail him at imacmillan@aqmd.gov. For more information about the facility, please contact Mike Buckantz of Quemetco at (626) 937-3293 or email him at hranotification@rsrcorp.com.

Businesses receiving this notice should post it where it is most likely to be read by employees.

This notice is also available in Spanish (Español) and Chinese (中文) here:

<http://www.aqmd.gov/home/regulations/compliance/toxic-hot-spots-ab-2588/quemetco>

INFORMATION SHEET

What are toxic air pollutants?

Chemicals that cause cancer or other non-cancer health effects are known as toxic substances. When these toxic substances are released in the air, they are called toxic air pollutants.

Where do toxic air pollutants come from?

Toxic air pollutants come from a variety of sources. These sources include chemical plants and large manufacturers as well as cars and trucks and smaller businesses. Many products used at home, such as cleaners and paint thinners also contain toxic air pollutants.

What toxic air pollutants does this facility emit?

Under normal operation, this facility emits many toxic air pollutants including arsenic, lead, hexavalent chromium, and benzene. These pollutants could present potential cancer and non-cancer health risks to those in close proximity to Quemetco if they were exposed to the facility's 2013 emissions levels for many years. Emissions from this facility have been decreasing since 2013.

What is the cancer risk from this facility?

For chemicals that could cause potential carcinogenic health effects, a calculation called a "health risk assessment" was done. This is the best method officials currently have for estimating the chance that being exposed to a chemical over a long period of time will cause cancer. Because the odds are generally small, they are written as a "number of chances in one million" of getting cancer.

Based on the health risk assessment, people who live in the area shown on the Public Notification Area Map would have their chance of getting cancer increased by up to 16 chances in one million because of toxic air pollutant emissions from this facility. The attached Public Notification Area Map shows how far the 10 chances in one million cancer risk level extends into the community.

The health risk estimate conservatively assumes that a person is continually exposed for 30 years at a single location to the toxic air pollutant emissions that came from Quemetco in 2013. Most people do not experience this prolonged exposure, so their actual risk is likely to be lower.

How does the cancer risk from this facility compare to other cancer risks?

The cancer risk from this facility is relatively small compared to the average overall risk for people living in the United States. Currently, according to the American Cancer Society, about four out of ten people will get cancer sometime during their lifetime. In other words, the odds of getting cancer at some time in your life are about 400,000 chances per million.

What is the cancer risk from toxic air pollution in general?

SCAQMD's Multiple Air Toxics Exposure Study IV (MATES IV) presents estimates of cancer risk throughout SCAQMD's four county jurisdiction. The average cancer risk from all pollutants emitted from all sources (cars, trucks, factories, power plants, etc.) is about 900 per million.

What are the non-cancer health risks from this facility?

Long-term exposure to some toxic air pollutants emitted from Quemetco can have harmful effects on the cardiovascular, central nervous, and developmental/reproductive systems. The non-cancer health risks from toxic air pollutants are described using a 'Hazard Index'. A Hazard Index less than 1.0 indicates that adverse health effects are not expected. The factors used in a Hazard Index calculation are designed to protect public health in order to avoid underestimation, therefore exceeding a Hazard

Index of 1.0 does not automatically indicate an adverse health impact. However, increasing levels above 1.0 indicate higher likelihood that adverse health impacts could occur.

Assuming Quemetco's 2013 emission levels persisted for many years, people who work in the area shown on the Public Notification Area Map would experience a Hazard Index up to 1.28. The attached Public Notification Area Map shows how far the Hazard Index of 1.0 extends into the community. The calculated Hazard Index did not exceed 1.0 for any residential locations.

How was the health risk from this facility determined?

The health risk assessment relied on data collected from emission tests directly from Quemetco's air pollution control stacks in addition to ambient monitoring stations located both on and off of Quemetco's property. Guidance from the state Office of Environmental Health Hazard Assessment was used to determine how the levels of air pollution in the air may impact people's health. This guidance was updated in March 2015 to specially address recent scientific advancements in the understanding of how toxic air pollutants have a greater influence.

What is being done to reduce the health risks from this facility?

The state law requiring issuance of this public notice is one step in getting facilities throughout the state to reduce toxic emissions resulting from their operations. The SCAQMD and other agencies have also developed other programs designed to prevent pollution and reduce exposure to toxic air pollution. For example, SCAQMD's Rule 1402 applies to facilities like Quemetco that exceed specific risk thresholds and requires risks to be reduced below threshold as soon as possible and in no longer than three years. In addition, SCAQMD's Rule 1420.1 that specifically applies to lead battery recyclers like Quemetco has been revised several times in the past two years to require greater levels of emission controls and reporting.

How can I get more information?

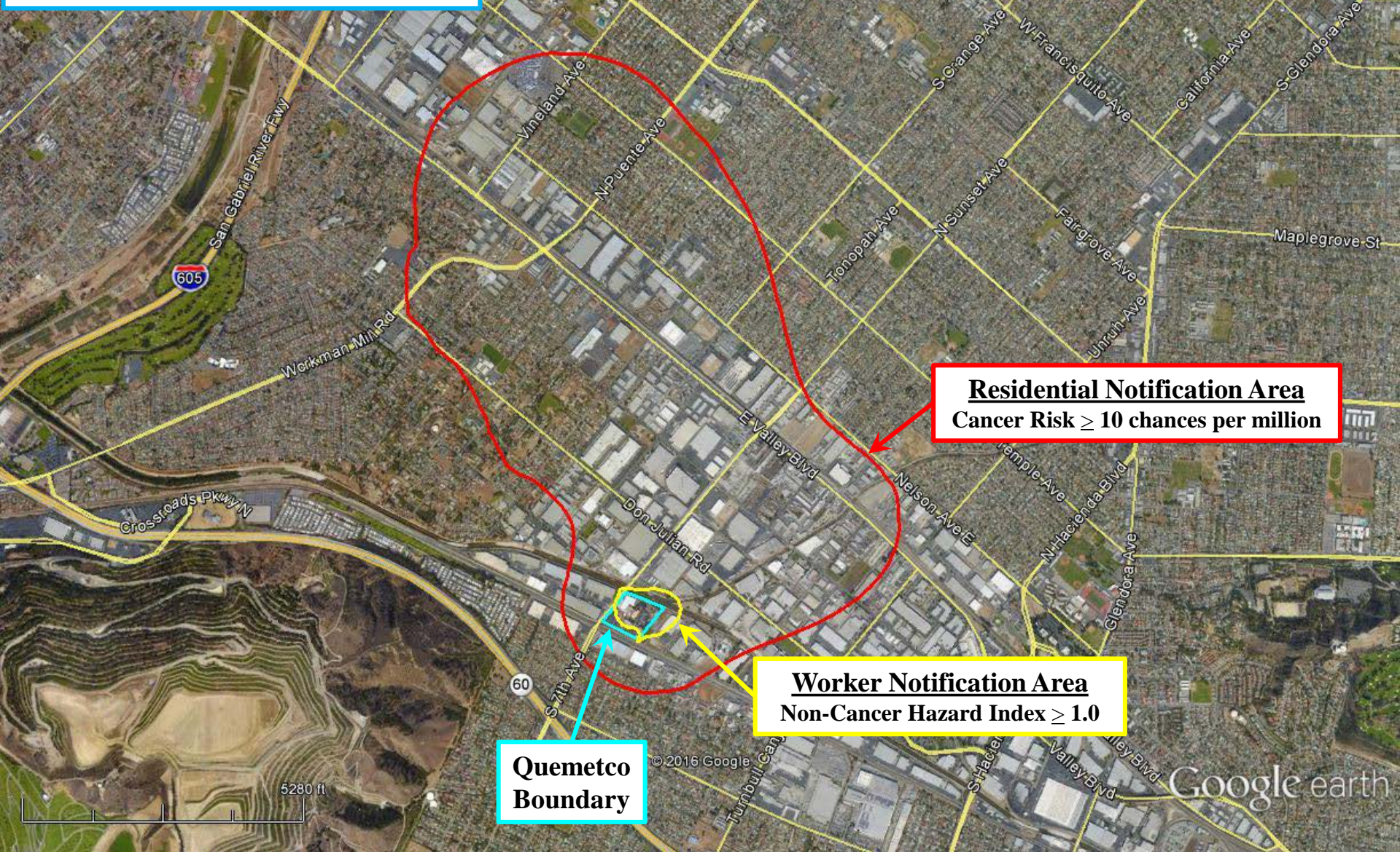
A copy of the Quemetco health risk assessment report is available for your review at the following libraries. The health risk assessment and other information about SCAQMD activities can be found on our website at:

<http://www.agmd.gov/home/regulations/compliance/toxic-hot-spots-ab-2588>

La Puente Library
15920 Central Ave.
La Puente, CA 91744
(626) 968 - 4613
Tue - Wed: 1 PM - 8 PM
Thu - Sat: 10 AM - 5 PM
Sun & Mon Closed

SCAQMD Library
21865 Copley Drive
Diamond Bar, CA 91765
(909) 396 - 2600
Tue - Thu: 10 AM - 5 PM
Fri: 8 AM - 3 PM
Sat, Sun, Mon: Closed

Public Notification Area Map



Public Notification Required by SCAQMD if:

- Cancer Risk is higher than 10 chances per million, or
- Non-Cancer Risk 'Hazard Index' is greater than 1.0.

A 'Hazard Index' less than 1.0 indicates that adverse non-cancer health effects are not expected.