



SOUTH COAST AQMD
CLERK OF THE BOARDS

November 13, 2015

CN: 15279

'15 NOV 13 P2:42

Mr. Edwin L. Pupka
Senior Enforcement Manager
Office of Engineering and Compliance
South Coast Air Quality Management District
21865 Copley Drive
Diamond Bar, CA 91765

**PROJECT: EXIDE TECHNOLOGIES FACILITY ID NO. 124868,
ORDER OF ABATEMENT CASE NO. 3151-32**
RE: WEEKLY STATUS REPORT # 61 (11/5/15 – 11/11/15)

Dear Mr. Pupka,

Tetra Tech Inc. is pleased to present the following Weekly Status Report for the above referenced project. This report covers the period of November 5, 2015 through November 11, 2015.

CURRENT ACTIVITIES WHERE PREVIOUSLY APPROVED MITIGATION MEASURES WERE FULLY IMPLEMENTED

Major items of work performed by Exide and/or its contractor(s) (including specific mitigation measures) during this reporting period where mitigation measures were observed to be implemented in full compliance with the previously approved mitigation measures under the Mitigation Plan for RCRA RFI Sampling, and Other Plant Activities or other Mitigation Plans, as approved by the SCAQMD, at the site during this period include:

TASK ID	Major Work Item	Mitigation Measure(s)
EX83/4	RCRA RFI Soil Sampling	Temporary Enclosure Under Negative Pressure*
EX105	Install Roof Gutters and Down Spouts	Pre-cleaning and Wet Methods

* Dust Trak monitoring performed for this work item.

RCRA RFI Soil Sampling

Advanced Geoscience and their subcontractors Cascade Drilling, Rice Environmental and Avocet continued RCRA RFI Soil Sampling onsite on Thursday, November 5, 2015. Castlerock constructed temporary enclosures around the work areas that were maintained under negative pressure and vented to an SCAQMD permitted HEPA filtration systems. Activities included coring through the asphalt to install new well vaults for two existing wells. Soil and asphalt cuttings were placed into 55-gallon drums within a temporary enclosure. Activities were suspended on Friday, November 6, 2105, when unexpected field conditions were encountered at one of the locations. Exide is

Tetra Tech BAS, Inc.

1360 Valley Vista Drive, Diamond Bar, CA 91765
Tel 909.860.7777 Fax 909.860.8017 www.tetrattech.com

working with DTSC to determine how to proceed. RCRA RFI Soil Sampling activities on the Exide property will continue once a revised scope of work is identified to address the changed field conditions and approved by the regulatory agencies.

Verification activities included:

- Upwind and Downwind Dust Trak monitoring on the temporary enclosures when sampling activities were conducted within the enclosure, to monitor for fugitive dust emissions. Review of Dust Trak data did not indicate that work associated with the RCRA RFI Soil Sampling was generating fugitive dust emissions.
- Confirmation that negative pressure was maintained by checking the gauge on the temporary enclosures.
- Periodic visual inspection of the temporary enclosures to confirm that no visible leaks or tears were present, that the structural integrity of the enclosures were maintained and that they were under negative pressure and vented to a SCAQMD permitted HEPA filtration system. Any noted areas where seams needed to be re-taped were repaired by Castlerock prior to resuming work within the enclosures. Any observed conditions requiring repair were addressed immediately.

Roof Gutters and Down Spouts

Advanced Construction began installation of gutters on the south end of the Total Enclosure Building on Monday, November 9, 2015. The work area was pre-cleaned and all wash waters were collected using a SCAQMD permitted HEPA vacuum. The work area was kept wet during the installation of the new gutter system. Installation of the new gutters will continue into the next reporting period.

Verification activities included:

- Periodic visual inspection of the installation activity to confirm that the area was pre-cleaned, that all cleaning liquids were collected using HEPA vacuums, confirmation that the HEPA vacuums were permitted by SCAQMD, confirmation that the area was maintained wet, and confirmation that installation activities were as described in the approved mitigation plan.

CURRENT ACTIVITIES WHERE A DEVIATION FROM PREVIOUSLY APPROVED MITIGATION MEASURES WERE OBSERVED AND THE CORRECTIVE ACTIONS TAKEN

Major items of work performed by Exide and/or its contractor(s) (including specific mitigation measures) currently under way or completed during this reporting period where for each of the activities described below, mitigation measures were implemented which to some extent deviated from the previously approved mitigation measures under the Mitigation Plan for RCRA RFI Sampling, and Other Plant Activities or other Mitigation Plans, as approved by the SCAQMD:

TASK ID	Major Work Item	Deviation(s)	CORRECTIVE ACTION
None			

In general accordance with the Order for Abatement Case No. 3151-32 Findings and Decision, air monitoring, if required, was conducted during a portion of all repair work performed within the temporary enclosures on a daily basis. If the results of continuous Dust Trak air monitoring detected excessive dust, additional suppression activities are required to be implemented. For this reporting period, Dust Trak monitoring did not detect excessive dust being generated from repair activities.

Activity Which Resulted in Excessive Dust	Additional Suppression Activity
None	None

ACTUAL vs. FORECAST PROGRESS:

Exide Technologies submitted a schedule which outlines the tasks needed to be completed in response to this abatement order. The attached Gant Chart shows scheduled progress for all activities planned for the upcoming two week period. The following table shows the status of these activities.

TASK	STATUS
None	None

WORK SCHEDULED DURING THE UPCOMING PERIOD:

The following activities are anticipated for the upcoming weeks:

Week	Anticipated Activities
Nov. 12 – Nov. 18	<ul style="list-style-type: none"> Gutters and Downspouts on Total Enclosure Building Repair City Water Line at East Fence

Week	Anticipated Activities
Nov. 19 - Nov. 25	

KEY MILESTONES:

The following key milestones were achieved during this reporting period:

- o None.

WORKER SAFETY CONCERNS:

The following Health and Safety issues, as they apply to Tetra Tech employees, were observed during this reporting period:

- None.

POTENTIAL CHANGES AND ACTION ITEMS REQUIRING RESOLUTION:

The following items require resolution:

- None at this time.

SUMMARY:

The summary provided herein covers the activities for the period of November 5, 2015 through November 11, 2015. Tetra Tech continues to perform routine inspections of the facility to document ongoing activities including the cleaning of the flood control channel easement that dissects the site including Dust Trak monitoring on November 6, 2015 when cleaning activities were near the mid monitoring location. Please find attached a copy of Exide's upcoming two weeks schedule and site map identifying the location of the activities on the upcoming two weeks schedule.

Should you have questions regarding this report, or require additional information, please contact me at your earliest convenience.

Sincerely,



Nick Somogyi
Project Engineer

ATTACHMENTS:

Gant Chart Schedule
Site Map
Field Monitoring Data

Gant Chart Schedule

Project Schedule

Week of 11/02/15 – 11/25/15

Rev: 11/12/2015



Recycling Division, Vernon, CA

Mitigation Plan Risks	Task Name	Plant Location	Duration	Start Date	Finish Date	%	10/31/2015							11/07/15					11/14/15					11/21/15				
							02	03	04	05	06	07	08	09	10	11	12	13	14	15	16	17	18	19	20	21	22	23
Ex72	Cleaning of Assorted Materials in Total Enclosure	Total Enclosure	406 days	11/20/14	12/31/15	80%																						
Ex76	Various Work Methods in Total Enclosure	Total Enclosure	405 days	11/21/14	12/31/15	80%																						
4	RCRA RFI Soil Sampling	General	261 days	2/18/15	11/6/15	97%																						
Ex83	RFI Soil Sampling Supplemental	General	261 days	2/18/15	11/6/15	97%																						
Ex 105	Gutters & Downspouts on the Total Enclosure Bldg	Total Enclosure Roof	5 days	11/9/14	11/13/15	60%																						
Ex106	Repairing City Water Line at East Fence	East Fence	1 day	11/13/15	11/13/15	0																						

*Numbering system correlates with Mitigation plan document.
Ex refers to additional work part of Sec. 6b in the Mitigation plan document.*

Site Map

Mitigation Project Map Layout

Week 11/02/15 – 11/25/15

Rev: 11/12/15

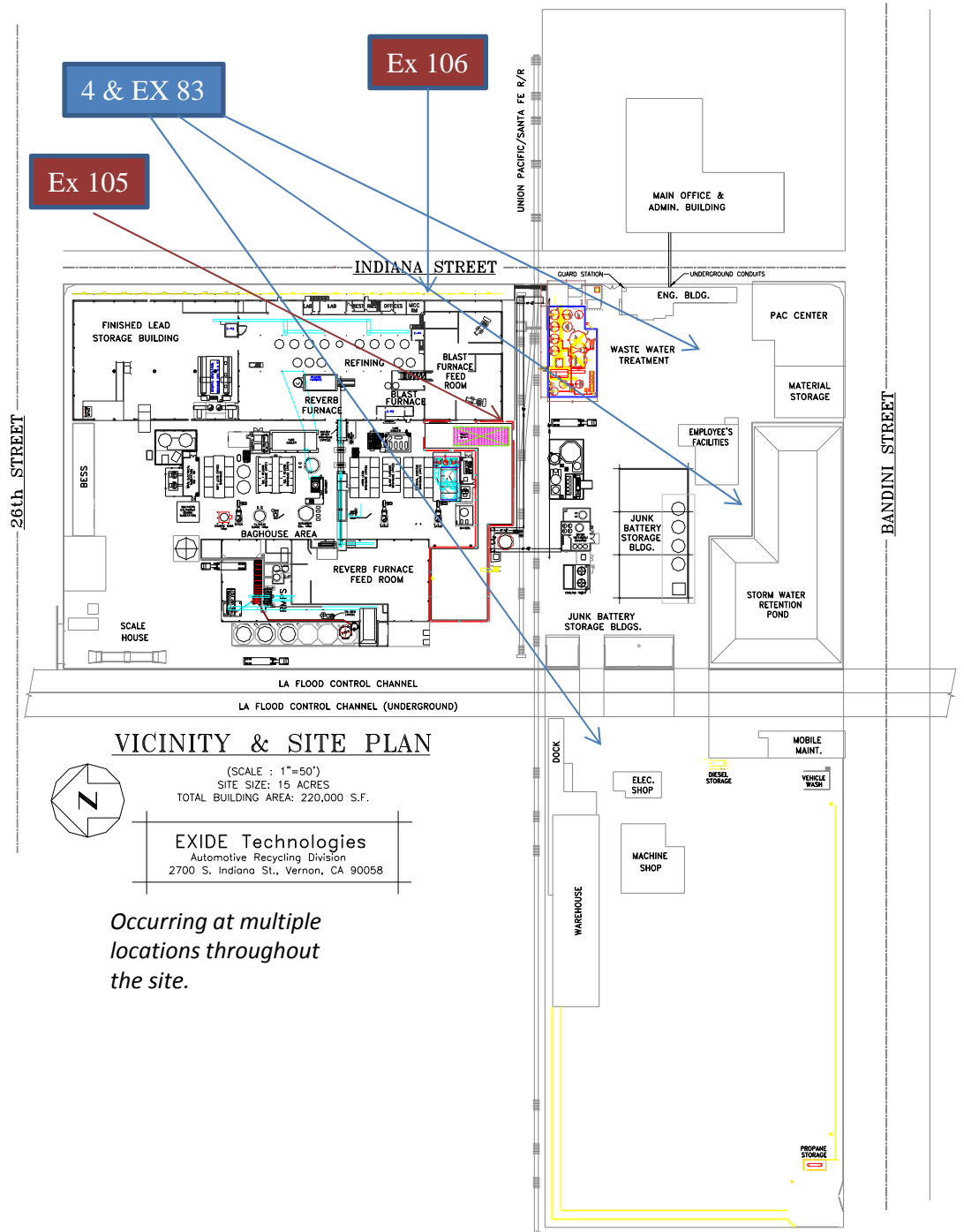
4. RCRA RFI Soil Sampling

Ex 83. RFI Soil Sampling Supplemental

Ex 72. Cleaning of Assorted Materials in Total Enclosure

Ex 76. Various Work Methods in Total Enclosure

Ex 105 Gutters & Downspouts on the Total Enclosure Bldg.



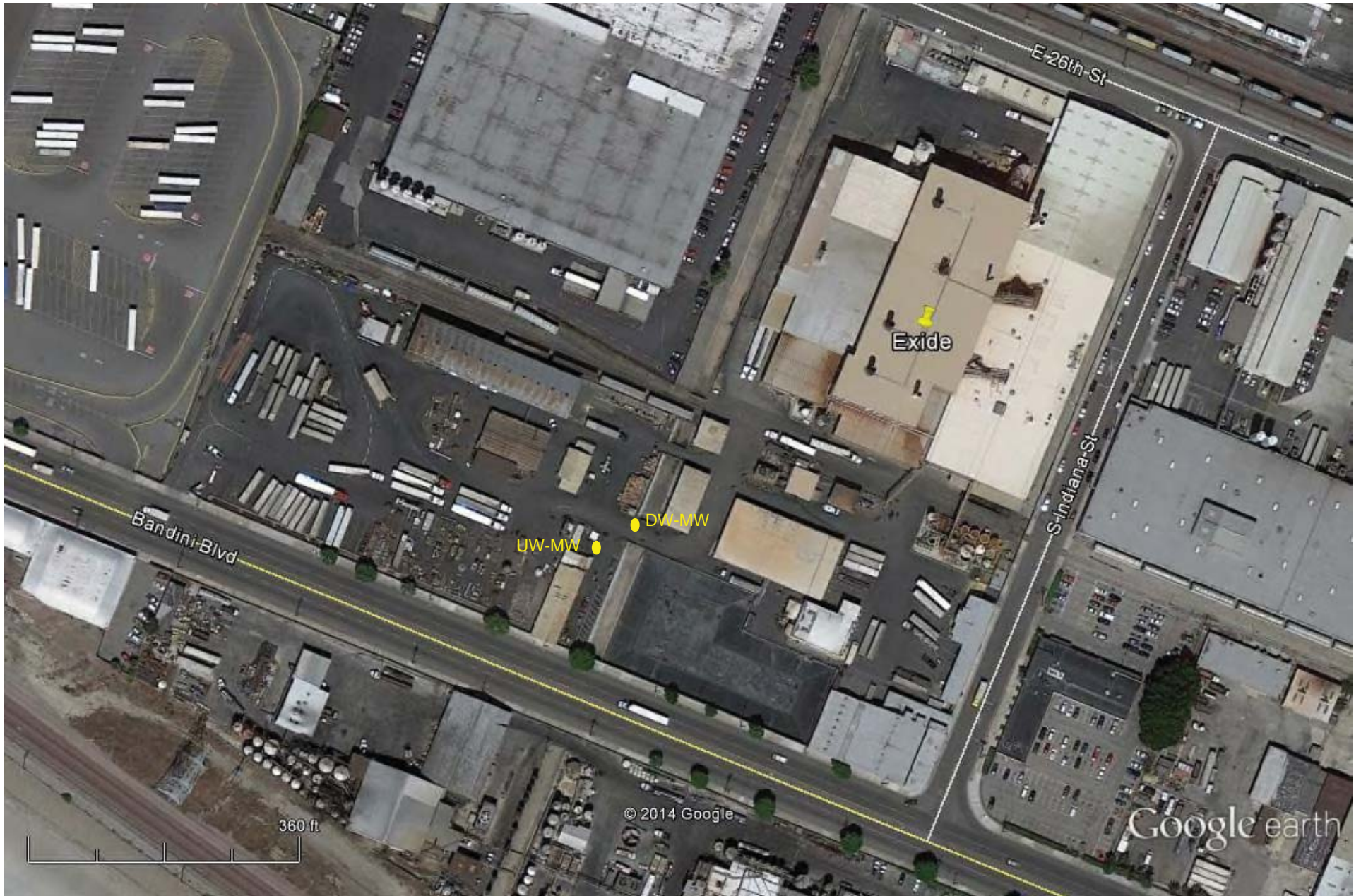
Occurring at multiple locations throughout the site.

Numbering system correlates with Mitigation plan document. Ex refers to additional work part of Sec. 6b in the Mitigation plan document.

Mitigation Schedule and Map_111215.pptx

Monitoring Results / Reports
(Thursday, November 5, 2015)

ACTIVITY	SERIAL NUMBER	LOCATION
EX83/4 RCRA RFI Soil Sampling (Mystery Well)	8533113401	Upwind
EX83/4 RCRA RFI Soil Sampling (Mystery Well)	8533141005	Downwind



Exide Technologies
2700 Indiana Street
Vernon, CA 90058

11/5/2015 Work Area EX- 83/4

Test 003

Instrument		Data Properties	
Model	DustTrak DRX	Start Date	11/05/2015
Instrument S/N	8533113401	Start Time	10:46:53
		Stop Date	11/05/2015
		Stop Time	12:26:53
		Total Time	0:01:40:00
		Logging Interval	300 seconds

Test Data							
Data Point	Date	Time	PM1 mg/m ³	PM2.5 mg/m ³	RESP mg/m ³	PM10 mg/m ³	TOTAL mg/m ³
1	11/05/2015	10:51:53	0.010	0.010	0.010	0.011	0.011
2	11/05/2015	10:56:53	0.008	0.008	0.008	0.008	0.009
3	11/05/2015	11:01:53	0.009	0.009	0.010	0.010	0.010
4	11/05/2015	11:06:53	0.009	0.009	0.010	0.010	0.010
5	11/05/2015	11:11:53	0.010	0.011	0.011	0.011	0.011
6	11/05/2015	11:16:53	0.010	0.010	0.011	0.011	0.011
7	11/05/2015	11:21:53	0.011	0.012	0.013	0.014	0.014
8	11/05/2015	11:26:53	0.009	0.009	0.010	0.010	0.010
9	11/05/2015	11:31:53	0.011	0.011	0.012	0.012	0.012
10	11/05/2015	11:36:53	0.011	0.011	0.011	0.012	0.012
11	11/05/2015	11:41:53	0.011	0.011	0.011	0.012	0.012
12	11/05/2015	11:46:53	0.010	0.010	0.010	0.011	0.011
13	11/05/2015	11:51:53	0.010	0.010	0.010	0.010	0.010
14	11/05/2015	11:56:53	0.009	0.009	0.009	0.010	0.010
15	11/05/2015	12:01:53	0.009	0.009	0.009	0.010	0.010
16	11/05/2015	12:06:53	0.009	0.009	0.009	0.010	0.010
17	11/05/2015	12:11:53	0.009	0.009	0.009	0.010	0.010
18	11/05/2015	12:16:53	0.008	0.008	0.008	0.008	0.008
19	11/05/2015	12:21:53	0.008	0.009	0.009	0.009	0.009
20	11/05/2015	12:26:53	0.008	0.008	0.008	0.008	0.008

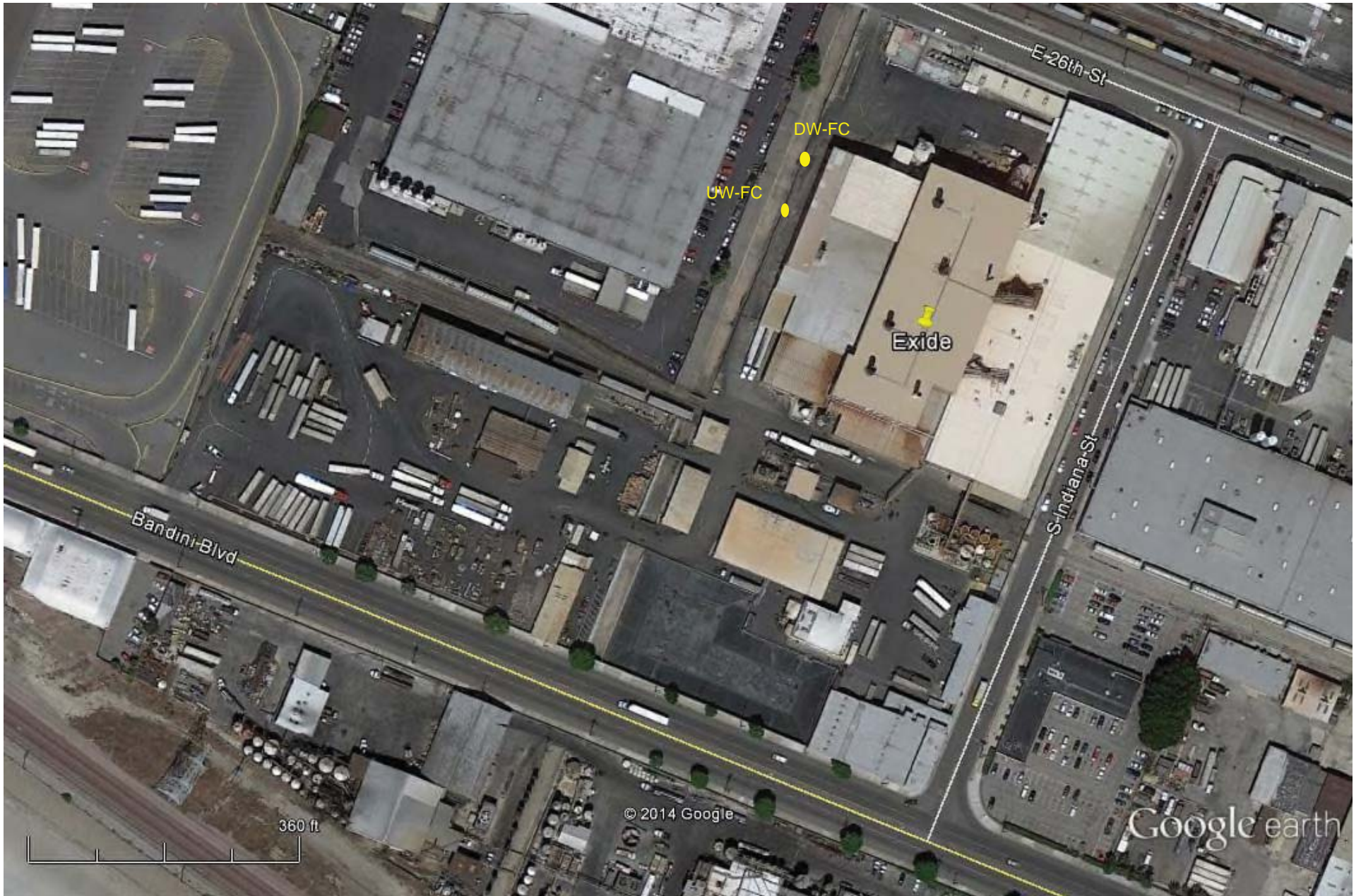
Test 003

Instrument		Data Properties	
Model	DustTrak DRX	Start Date	11/05/2015
Instrument S/N	8533141005	Start Time	09:56:20
		Stop Date	11/05/2015
		Stop Time	12:21:20
		Total Time	0:02:25:00
		Logging Interval	300 seconds

Test Data							
Data Point	Date	Time	PM1 mg/m ³	PM2.5 mg/m ³	RESP mg/m ³	PM10 mg/m ³	TOTAL mg/m ³
1	11/05/2015	10:01:20	0.007	0.007	0.007	0.008	0.009
2	11/05/2015	10:06:20	0.010	0.011	0.012	0.012	0.013
3	11/05/2015	10:11:20	0.009	0.009	0.010	0.012	0.012
4	11/05/2015	10:16:20	0.008	0.009	0.009	0.011	0.011
5	11/05/2015	10:21:20	0.006	0.006	0.007	0.008	0.008
6	11/05/2015	10:26:20	0.006	0.006	0.007	0.008	0.008
7	11/05/2015	10:31:20	0.006	0.007	0.007	0.008	0.008
8	11/05/2015	10:36:20	0.005	0.005	0.005	0.006	0.006
9	11/05/2015	10:41:20	0.006	0.006	0.006	0.007	0.008
10	11/05/2015	10:46:20	0.006	0.006	0.006	0.007	0.007
11	11/05/2015	10:51:20	0.007	0.007	0.007	0.009	0.009
12	11/05/2015	10:56:20	0.006	0.006	0.006	0.007	0.007
13	11/05/2015	11:01:20	0.006	0.006	0.006	0.007	0.007
14	11/05/2015	11:06:20	0.006	0.007	0.007	0.008	0.008
15	11/05/2015	11:11:20	0.007	0.008	0.008	0.009	0.009
16	11/05/2015	11:16:20	0.006	0.007	0.007	0.008	0.008
17	11/05/2015	11:21:20	0.005	0.006	0.006	0.007	0.007
18	11/05/2015	11:26:20	0.005	0.005	0.005	0.006	0.007
19	11/05/2015	11:31:20	0.006	0.006	0.007	0.008	0.008
20	11/05/2015	11:36:20	0.006	0.007	0.007	0.008	0.008
21	11/05/2015	11:41:20	0.006	0.007	0.007	0.008	0.008
22	11/05/2015	11:46:20	0.005	0.005	0.005	0.007	0.007
23	11/05/2015	11:51:20	0.004	0.004	0.005	0.006	0.006
24	11/05/2015	11:56:20	0.003	0.003	0.003	0.004	0.005
25	11/05/2015	12:01:20	0.003	0.003	0.003	0.004	0.004
26	11/05/2015	12:06:20	0.002	0.003	0.003	0.004	0.004
27	11/05/2015	12:11:20	0.003	0.004	0.004	0.005	0.005
28	11/05/2015	12:16:20	0.001	0.001	0.001	0.002	0.002
29	11/05/2015	12:21:20	0.001	0.001	0.002	0.002	0.003

Monitoring Results / Reports
(Friday, November 6, 2015)

ACTIVITY	SERIAL NUMBER	LOCATION
Flood Control Channel Cleaning	8533113401	Upwind
Flood Control Channel Cleaning	8533141005	Downwind



Exide Technologies
2700 Indiana Street
Vernon, CA 90058

11/6/2015 Flood Control Channel
Cleaning

Test 004

Instrument		Data Properties	
Model	DustTrak DRX	Start Date	11/06/2015
Instrument S/N	8533113401	Start Time	10:37:34
		Stop Date	11/06/2015
		Stop Time	15:22:34
		Total Time	0:04:45:00
		Logging Interval	300 seconds

Test Data							
Data Point	Date	Time	PM1 mg/m ³	PM2.5 mg/m ³	RESP mg/m ³	PM10 mg/m ³	TOTAL mg/m ³
1	11/06/2015	10:42:34	0.016	0.017	0.017	0.018	0.018
2	11/06/2015	10:47:34	0.017	0.017	0.017	0.018	0.018
3	11/06/2015	10:52:34	0.017	0.017	0.017	0.018	0.018
4	11/06/2015	10:57:34	0.016	0.016	0.017	0.017	0.017
5	11/06/2015	11:02:34	0.017	0.018	0.018	0.019	0.019
6	11/06/2015	11:07:34	0.017	0.018	0.018	0.019	0.019
7	11/06/2015	11:12:34	0.018	0.018	0.019	0.019	0.019
8	11/06/2015	11:17:34	0.018	0.019	0.019	0.020	0.020
9	11/06/2015	11:22:34	0.019	0.019	0.019	0.020	0.020
10	11/06/2015	11:27:34	0.018	0.019	0.019	0.019	0.019
11	11/06/2015	11:32:34	0.015	0.015	0.015	0.016	0.016
12	11/06/2015	11:37:34	0.014	0.014	0.014	0.015	0.015
13	11/06/2015	11:42:34	0.012	0.013	0.013	0.013	0.013
14	11/06/2015	11:47:34	0.013	0.013	0.013	0.013	0.013
15	11/06/2015	11:52:34	0.015	0.015	0.015	0.016	0.016
16	11/06/2015	11:57:34	0.010	0.010	0.010	0.011	0.011
17	11/06/2015	12:02:34	0.011	0.011	0.011	0.012	0.012
18	11/06/2015	12:07:34	0.011	0.011	0.012	0.012	0.012
19	11/06/2015	12:12:34	0.009	0.009	0.009	0.009	0.009
20	11/06/2015	12:17:34	0.009	0.009	0.009	0.009	0.009
21	11/06/2015	12:22:34	0.008	0.008	0.008	0.009	0.009
22	11/06/2015	12:27:34	0.008	0.008	0.008	0.008	0.008
23	11/06/2015	12:32:34	0.007	0.007	0.008	0.008	0.008
24	11/06/2015	12:37:34	0.008	0.008	0.008	0.009	0.009
25	11/06/2015	12:42:34	0.008	0.008	0.008	0.009	0.009
26	11/06/2015	12:47:34	0.008	0.008	0.008	0.009	0.009
27	11/06/2015	12:52:34	0.008	0.008	0.008	0.009	0.009
28	11/06/2015	12:57:34	0.010	0.010	0.010	0.010	0.010
29	11/06/2015	13:02:34	0.008	0.008	0.009	0.009	0.009
30	11/06/2015	13:07:34	0.008	0.008	0.009	0.009	0.009
31	11/06/2015	13:12:34	0.007	0.008	0.008	0.008	0.008
32	11/06/2015	13:17:34	0.007	0.007	0.007	0.008	0.008
33	11/06/2015	13:22:34	0.008	0.008	0.008	0.008	0.008
34	11/06/2015	13:27:34	0.007	0.008	0.008	0.008	0.008
35	11/06/2015	13:32:34	0.008	0.008	0.008	0.009	0.009

Test Data							
Data Point	Date	Time	PM1 mg/m ³	PM2.5 mg/m ³	RESP mg/m ³	PM10 mg/m ³	TOTAL mg/m ³
36	11/06/2015	13:37:34	0.007	0.007	0.007	0.008	0.008
37	11/06/2015	13:42:34	0.008	0.008	0.008	0.009	0.009
38	11/06/2015	13:47:34	0.008	0.008	0.008	0.008	0.008
39	11/06/2015	13:52:34	0.009	0.009	0.010	0.010	0.010
40	11/06/2015	13:57:34	0.008	0.008	0.008	0.009	0.009
41	11/06/2015	14:02:34	0.008	0.009	0.009	0.010	0.010
42	11/06/2015	14:07:34	0.008	0.009	0.009	0.009	0.009
43	11/06/2015	14:12:34	0.008	0.008	0.008	0.008	0.008
44	11/06/2015	14:17:34	0.008	0.008	0.008	0.009	0.009
45	11/06/2015	14:22:34	0.010	0.010	0.011	0.012	0.012
46	11/06/2015	14:27:34	0.008	0.008	0.009	0.009	0.009
47	11/06/2015	14:32:34	0.009	0.009	0.009	0.010	0.010
48	11/06/2015	14:37:34	0.008	0.008	0.008	0.009	0.009
49	11/06/2015	14:42:34	0.009	0.009	0.010	0.011	0.011
50	11/06/2015	14:47:34	0.007	0.007	0.007	0.008	0.008
51	11/06/2015	14:52:34	0.007	0.008	0.008	0.008	0.009
52	11/06/2015	14:57:34	0.006	0.006	0.007	0.007	0.007
53	11/06/2015	15:02:34	0.006	0.007	0.007	0.007	0.007
54	11/06/2015	15:07:34	0.007	0.007	0.007	0.007	0.007
55	11/06/2015	15:12:34	0.007	0.008	0.008	0.008	0.008
56	11/06/2015	15:17:34	0.006	0.007	0.007	0.007	0.007
57	11/06/2015	15:22:34	0.007	0.007	0.008	0.008	0.008

Test 004

Instrument		Data Properties	
Model	DustTrak DRX	Start Date	11/06/2015
Instrument S/N	8533141005	Start Time	10:42:31
		Stop Date	11/06/2015
		Stop Time	15:22:31
		Total Time	0:04:40:00
		Logging Interval	300 seconds

Test Data							
Data Point	Date	Time	PM1 mg/m ³	PM2.5 mg/m ³	RESP mg/m ³	PM10 mg/m ³	TOTAL mg/m ³
1	11/06/2015	10:47:31	0.014	0.014	0.014	0.015	0.016
2	11/06/2015	10:52:31	0.014	0.015	0.015	0.016	0.016
3	11/06/2015	10:57:31	0.014	0.014	0.014	0.015	0.015
4	11/06/2015	11:02:31	0.015	0.015	0.015	0.016	0.016
5	11/06/2015	11:07:31	0.015	0.015	0.016	0.017	0.017
6	11/06/2015	11:12:31	0.016	0.016	0.016	0.017	0.017
7	11/06/2015	11:17:31	0.016	0.017	0.017	0.019	0.019
8	11/06/2015	11:22:31	0.017	0.017	0.017	0.018	0.018
9	11/06/2015	11:27:31	0.016	0.017	0.017	0.018	0.018
10	11/06/2015	11:32:31	0.012	0.012	0.013	0.013	0.014
11	11/06/2015	11:37:31	0.011	0.011	0.012	0.012	0.012
12	11/06/2015	11:42:31	0.010	0.010	0.010	0.011	0.011
13	11/06/2015	11:47:31	0.010	0.010	0.011	0.011	0.011
14	11/06/2015	11:52:31	0.013	0.013	0.013	0.014	0.014
15	11/06/2015	11:57:31	0.007	0.007	0.008	0.008	0.008
16	11/06/2015	12:02:31	0.008	0.008	0.008	0.009	0.009
17	11/06/2015	12:07:31	0.007	0.008	0.008	0.008	0.009
18	11/06/2015	12:12:31	0.005	0.005	0.005	0.006	0.006
19	11/06/2015	12:17:31	0.005	0.005	0.005	0.005	0.006
20	11/06/2015	12:22:31	0.003	0.003	0.003	0.004	0.004
21	11/06/2015	12:27:31	0.002	0.002	0.003	0.003	0.003
22	11/06/2015	12:32:31	0.002	0.002	0.002	0.003	0.003
23	11/06/2015	12:37:31	0.002	0.003	0.003	0.004	0.004
24	11/06/2015	12:42:31	0.002	0.002	0.002	0.003	0.003
25	11/06/2015	12:47:31	0.002	0.002	0.002	0.003	0.003
26	11/06/2015	12:52:31	0.002	0.002	0.002	0.003	0.003
27	11/06/2015	12:57:31	0.003	0.004	0.004	0.005	0.005
28	11/06/2015	13:02:31	0.002	0.002	0.002	0.003	0.003
29	11/06/2015	13:07:31	0.001	0.001	0.002	0.002	0.002
30	11/06/2015	13:12:31	0.000	0.000	0.000	0.001	0.001
31	11/06/2015	13:17:31	0.000	0.000	0.000	0.000	0.000
32	11/06/2015	13:22:31	0.000	0.000	0.000	0.000	0.001
33	11/06/2015	13:27:31	0.000	0.000	0.000	0.000	0.001
34	11/06/2015	13:32:31	0.000	0.000	0.000	0.000	0.000
35	11/06/2015	13:37:31	0.000	0.000	0.000	0.000	0.000

Test Data							
Data Point	Date	Time	PM1 mg/m ³	PM2.5 mg/m ³	RESP mg/m ³	PM10 mg/m ³	TOTAL mg/m ³
36	11/06/2015	13:42:31	0.000	0.000	0.000	0.001	0.001
37	11/06/2015	13:47:31	0.000	0.000	0.000	0.001	0.001
38	11/06/2015	13:52:31	0.001	0.001	0.002	0.002	0.002
39	11/06/2015	13:57:31	0.000	0.000	0.000	0.000	0.000
40	11/06/2015	14:02:31	0.001	0.001	0.001	0.002	0.002
41	11/06/2015	14:07:31	0.000	0.000	0.001	0.001	0.002
42	11/06/2015	14:12:31	0.000	0.000	0.000	0.000	0.001
43	11/06/2015	14:17:31	0.000	0.000	0.000	0.001	0.001
44	11/06/2015	14:22:31	0.002	0.002	0.003	0.004	0.005
45	11/06/2015	14:27:31	0.000	0.000	0.001	0.001	0.001
46	11/06/2015	14:32:31	0.000	0.001	0.001	0.002	0.002
47	11/06/2015	14:37:31	0.001	0.001	0.001	0.002	0.003
48	11/06/2015	14:42:31	0.001	0.001	0.002	0.003	0.003
49	11/06/2015	14:47:31	0.000	0.000	0.001	0.001	0.002
50	11/06/2015	14:52:31	0.001	0.001	0.002	0.003	0.003
51	11/06/2015	14:57:31	0.000	0.000	0.000	0.001	0.001
52	11/06/2015	15:02:31	0.000	0.001	0.001	0.002	0.002
53	11/06/2015	15:07:31	0.001	0.001	0.001	0.002	0.002
54	11/06/2015	15:12:31	0.002	0.002	0.002	0.003	0.003
55	11/06/2015	15:17:31	0.001	0.001	0.002	0.002	0.002
56	11/06/2015	15:22:31	0.002	0.003	0.003	0.004	0.004