





THE AIRCASTING PLATFORM

HOW IT WORKS



your air quality sensor

AIRBEAM



your air quality recordings and location map

AIRCASTING
MOBILE APP



community perspective and awareness

AIRCASTING
WEBSITE



your optional public air quality indicator

LED WEARABLES

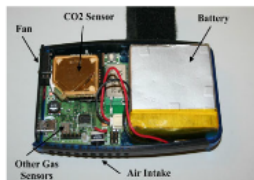
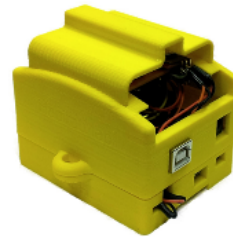
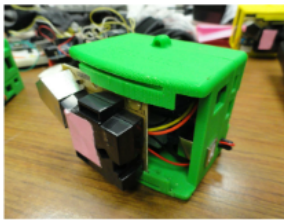


individual, community and government change

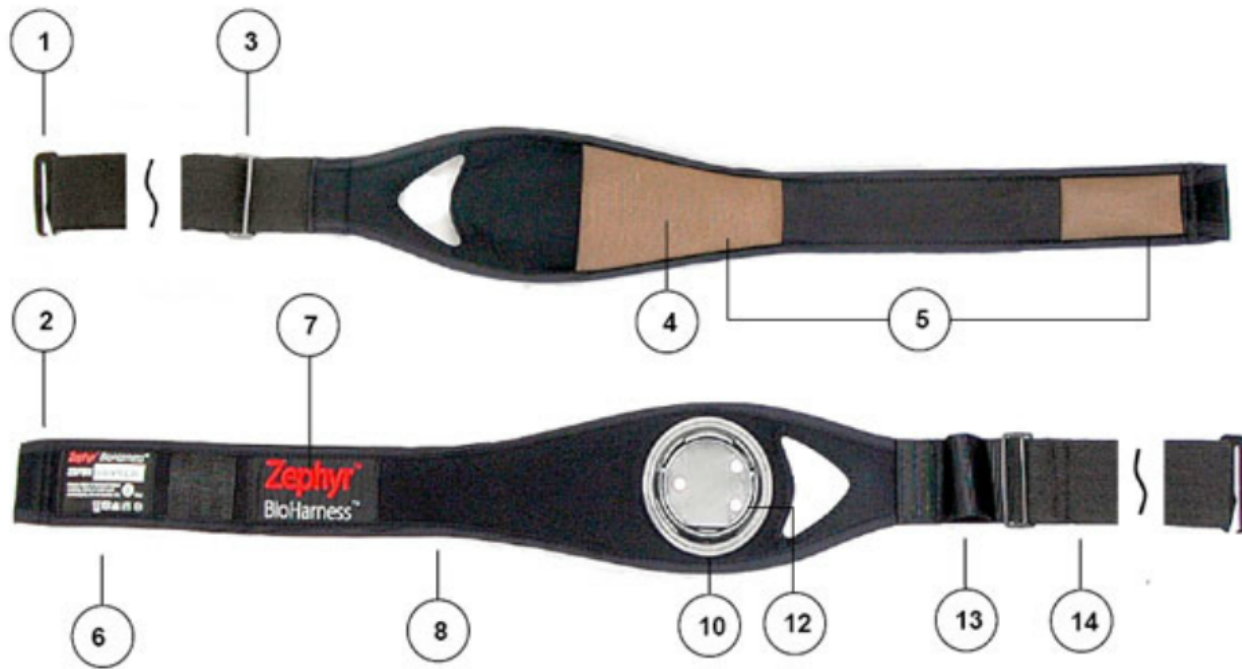




The AirCasting Family







Component Parts:

1. Main fastener hook
2. Main fastener sleeve
3. Size adjustment slider
4. Internal Breathing Rate Sensor
5. ECG sensors
6. Care label with Size, Serial # & Wash symbols
7. Brand label
8. Strap main body
9. Device receptacle
10. Electrical contacts
11. Shoulder strap (detachable, not visible)
12. Shoulder strap adjuster buckle (not visible)
13. Tension indicator loop
14. Strap (rear)



AIRBEAM



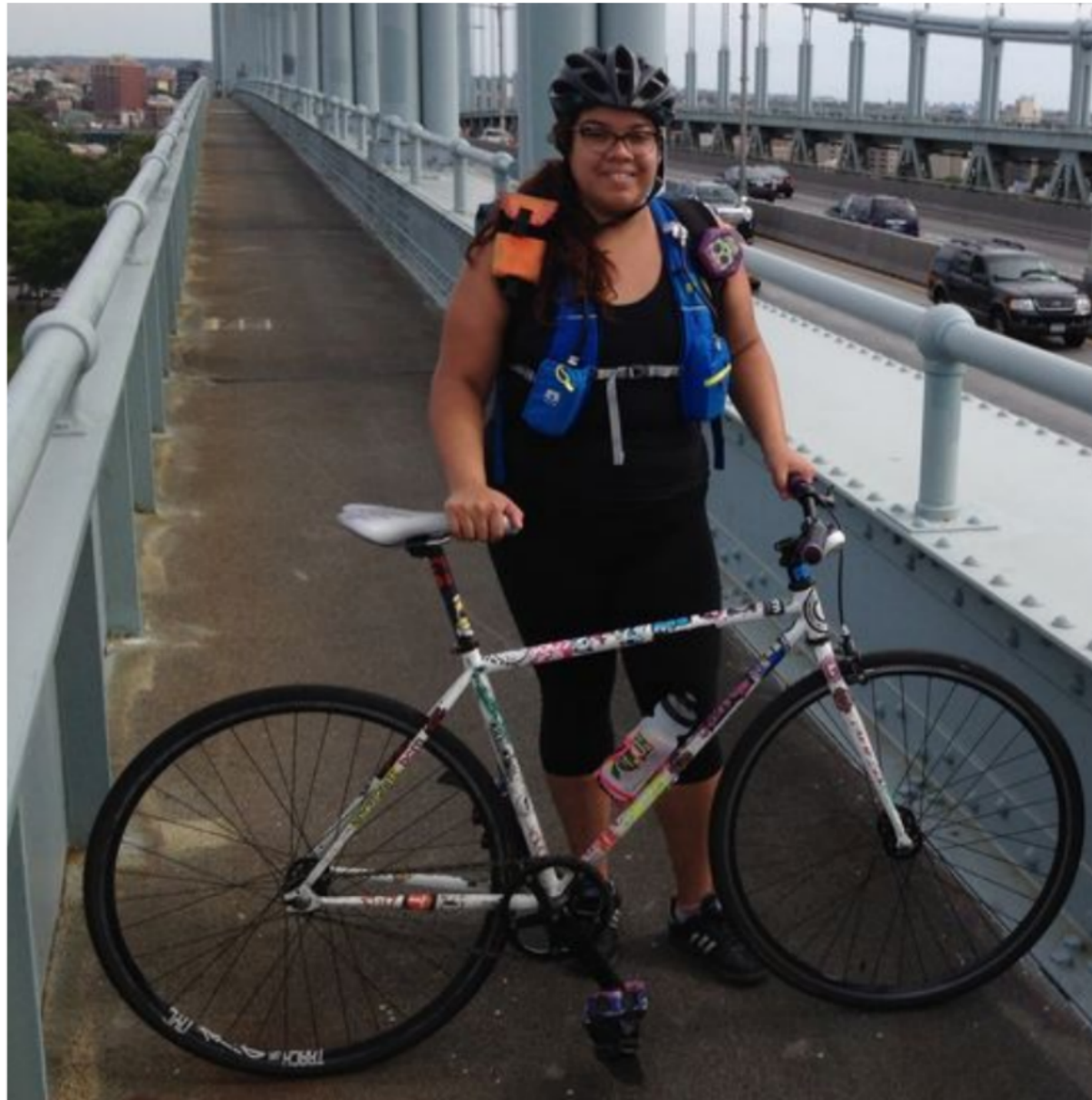


COLUMBIA
UNIVERSITY

MAILMAN SCHOOL
of PUBLIC HEALTH



Biking & Breathing



THE GLOBAL CLIMATE & HEALTH ALLIANCE



India has the 2nd
deadliest air
pollution levels in
South East Asia.

Source: 'World Health Statistics 2017: Monitoring health for the SDGs' World Health Organization



Healthy Air. Healthy Climate.



Real-time portable air monitoring at the Fair!



Visitors to the Eco Experience at the State Fair can learn about an interesting new idea to "crowdsource" air quality monitoring. The MPCA is pilot testing small, portable monitoring devices called AirBeams that measure levels of fine particles in the air. The Airbeam is a low cost air pollution sensor that measures, maps, and graphs fine particle (PM2.5) pollution in real time. The AirBeam connects to an app in any mobile android device, allowing users to explore air quality wherever they go. MPCA staff have taken Airbeams around the fair to measure pollution levels and can show visitors maps of the results.



The power of a crowd

The MPCA measures fine particles at over 20 locations across Minnesota.



La qualité de l'air
En Auvergne-Rhône-Alpes
+ d'infos sur l'air de l'Auvergne

- LAIR DE MA RÉGION
- TOUT COMPRENDRE SUR L'AIR
- AGIR ENSEMBLE
- DONNÉES & PUBLICATIONS
- QUI SOMMES-NOUS ?

Accueil > Actualités > L'air est notre terrain de jeu : participez à une nouvelle expérimentation !



Actualité
13 octobre 2016 | Evaluation de la qualité de l'air, Recherche/coopération
L'air est notre terrain de jeu : participez à une nouvelle expérimentation !

LIENS UTILES

[Site du projet Mobicit'air](#)

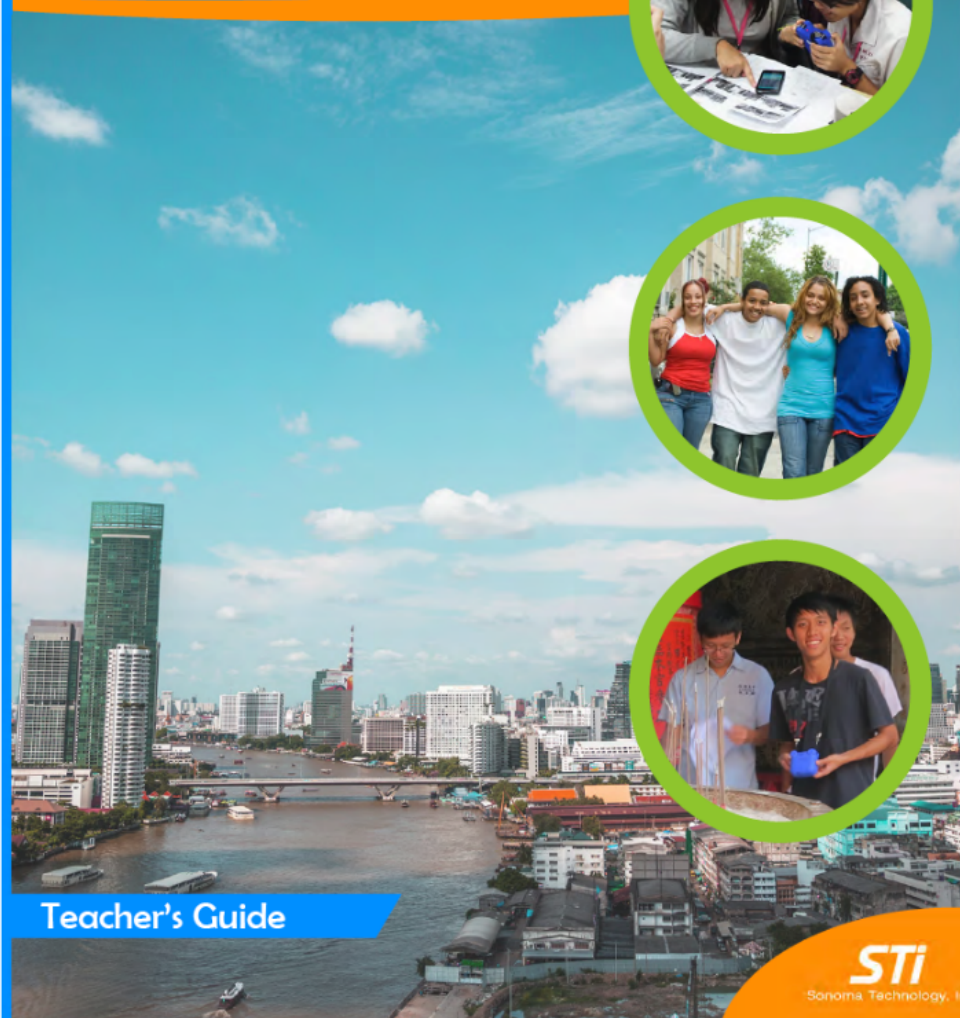
RESSOURCES ASSOCIÉES

Il n'existe pas de ressource associée à cette page



Kids Making Sense

EMPOWERING YOUTH AND COMMUNITIES
TO CLEAR THE AIR AND IMPROVE PUBLIC HEALTH



Teacher's Guide

STI
Sorioma Technology, Inc.
December 2015

Table of Contents

Teacher's Guide

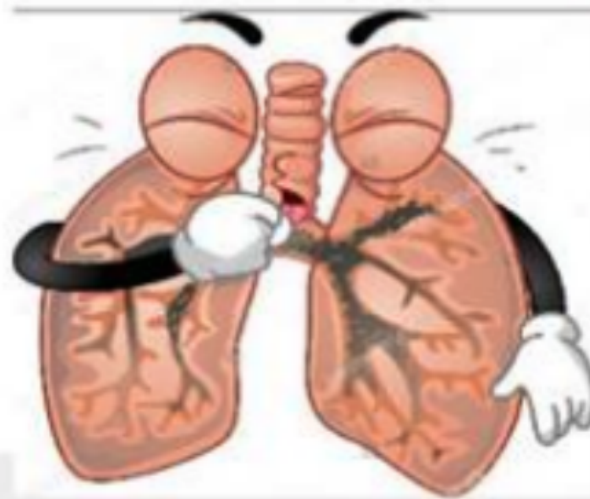
Acknowledgments.....	ii
Getting Started.....	1
Introduction.....	2
How to Use This Guide.....	2
Standards.....	5
Our Air and Pollution.....	9
Activity 1: Background.....	11
Activity 1: What Is Clean Air?.....	14
Particle Pollution.....	21
Activity 2: What Does a Particle Look Like?.....	23
Particle Sources.....	31
Activity 3a: Background.....	33
Activity 3a: Where Do Particles Come From?.....	36
Activity 3b: How Do You Design a Study?.....	43
Health Effects of Particles.....	49
Activity 4: Background.....	51
Activity 4: How Much Air Can You Exhale?.....	53
Measuring Particles.....	65
Activity 5: How Do We Measure Particles?.....	67
Field Measurements.....	79
Activity 6: What Is in Our Air?.....	81
Interpret Your Data.....	91
Activity 7: What Did You Discover?.....	93
Be Part of the Solution.....	103
Activity 8: How Can You Help?.....	105

Shared Air/Shared Action (SA²): Community Empowerment through Low- cost Air Pollution Monitoring

Do you know what's in our air?

Southeast Environmental Task Force is looking for volunteers for our Air monitoring project in July 2017. We will have mobile testing routes as well as stationary site.

For questions & more information? Please contact:



Community organizer:
1. Samuel Corona
Samcor80@gmail.com
(773)641-3917

Community members may qualify for (\$) stipend for citizens scientists



CLEARING THE AIR

How Reforming the Commercial Waste Sector Can Address Air Quality Issues in Environmental Justice Communities



KEY FINDINGS

SOUTH BRONX

Almost **half** of all trucks are **private waste trucks**



Up to **7x** higher
asthma-inducing
pollutant levels
compared to area average

ONE
COMMERCIAL
WASTE TRUCK



EVERY **24**
SECONDS

NORTH BROOKLYN

1/3 of all trucks are **private waste trucks**



Up to **5x** higher
asthma-inducing
pollutant levels
compared to area average

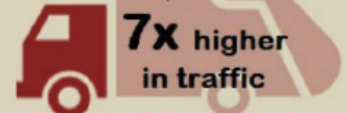
ONE
COMMERCIAL
WASTE TRUCK



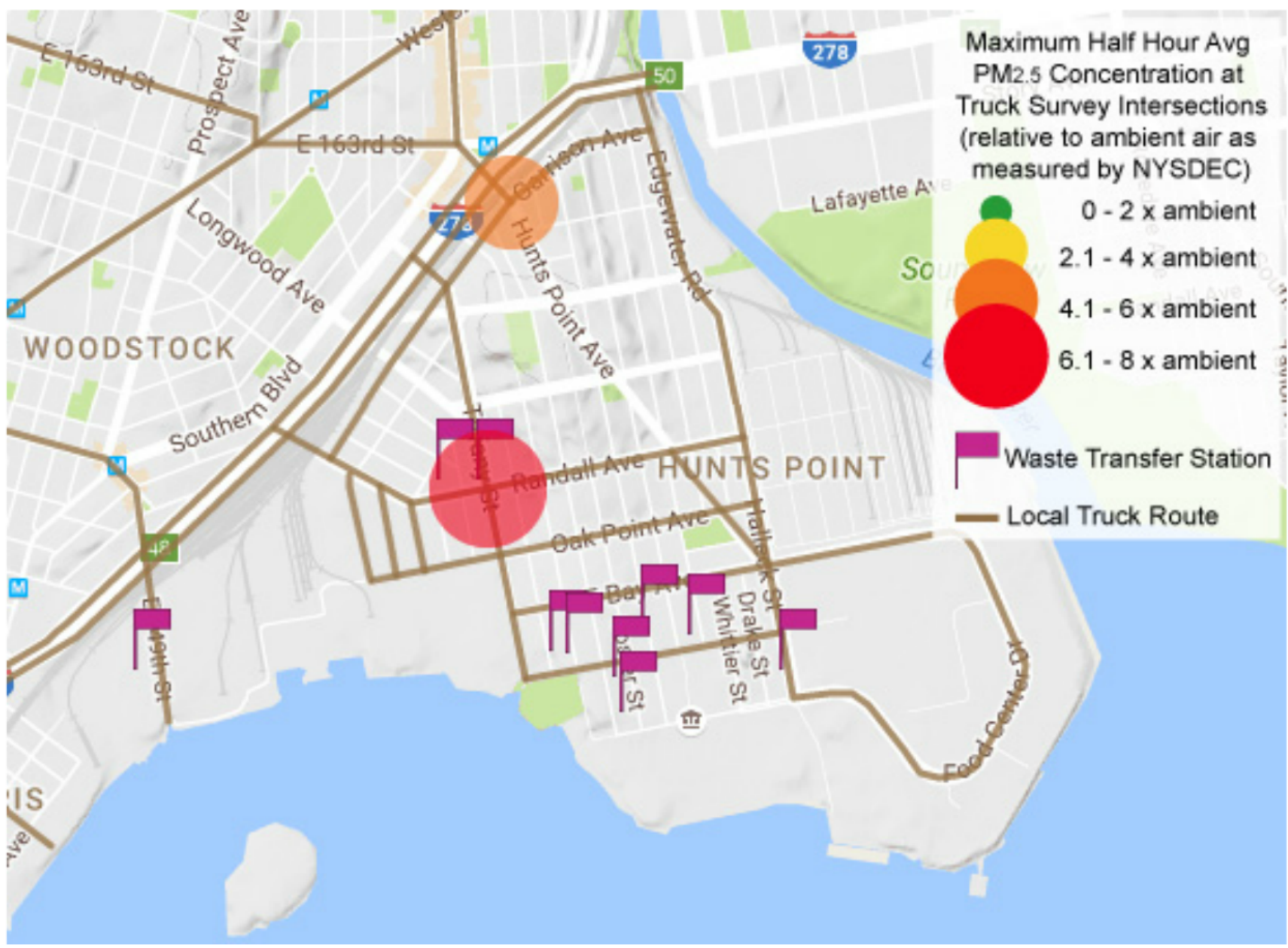
EVERY **60**
SECONDS

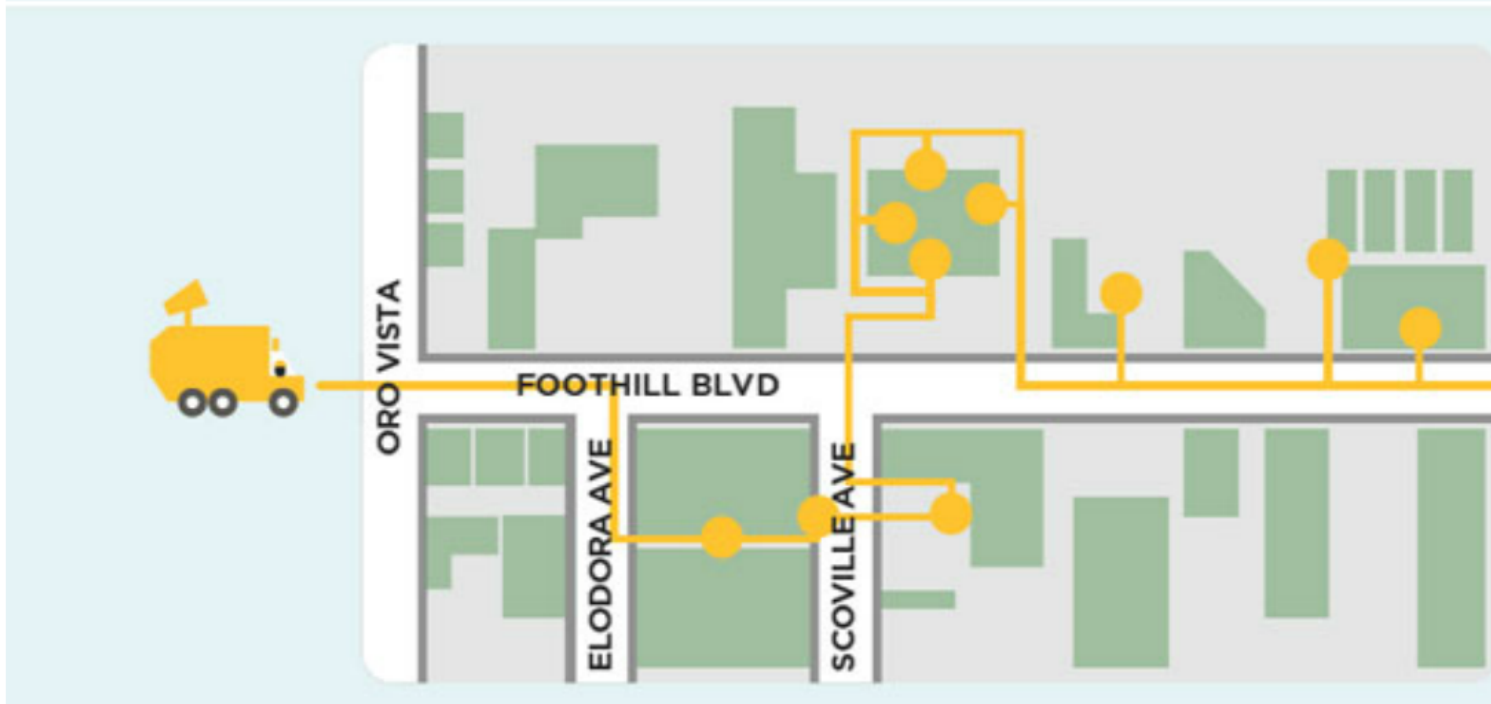
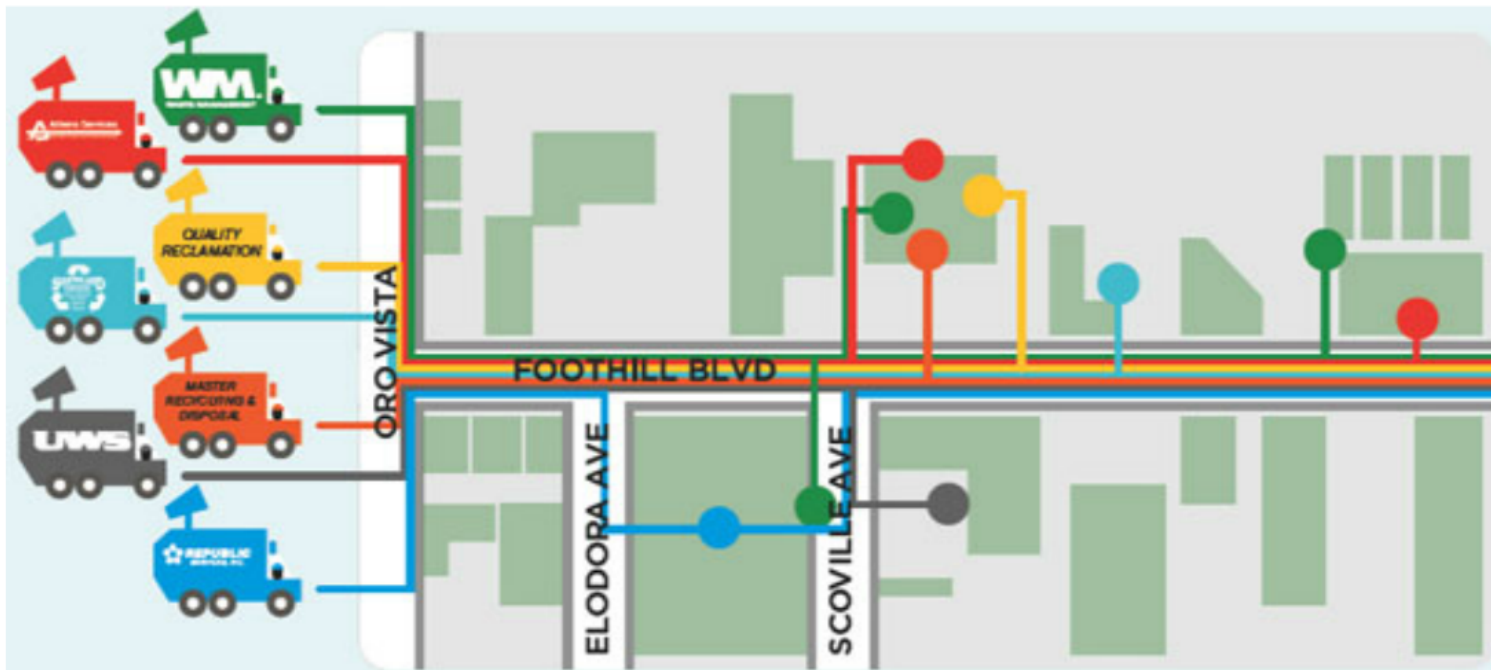
WORKER FINDINGS

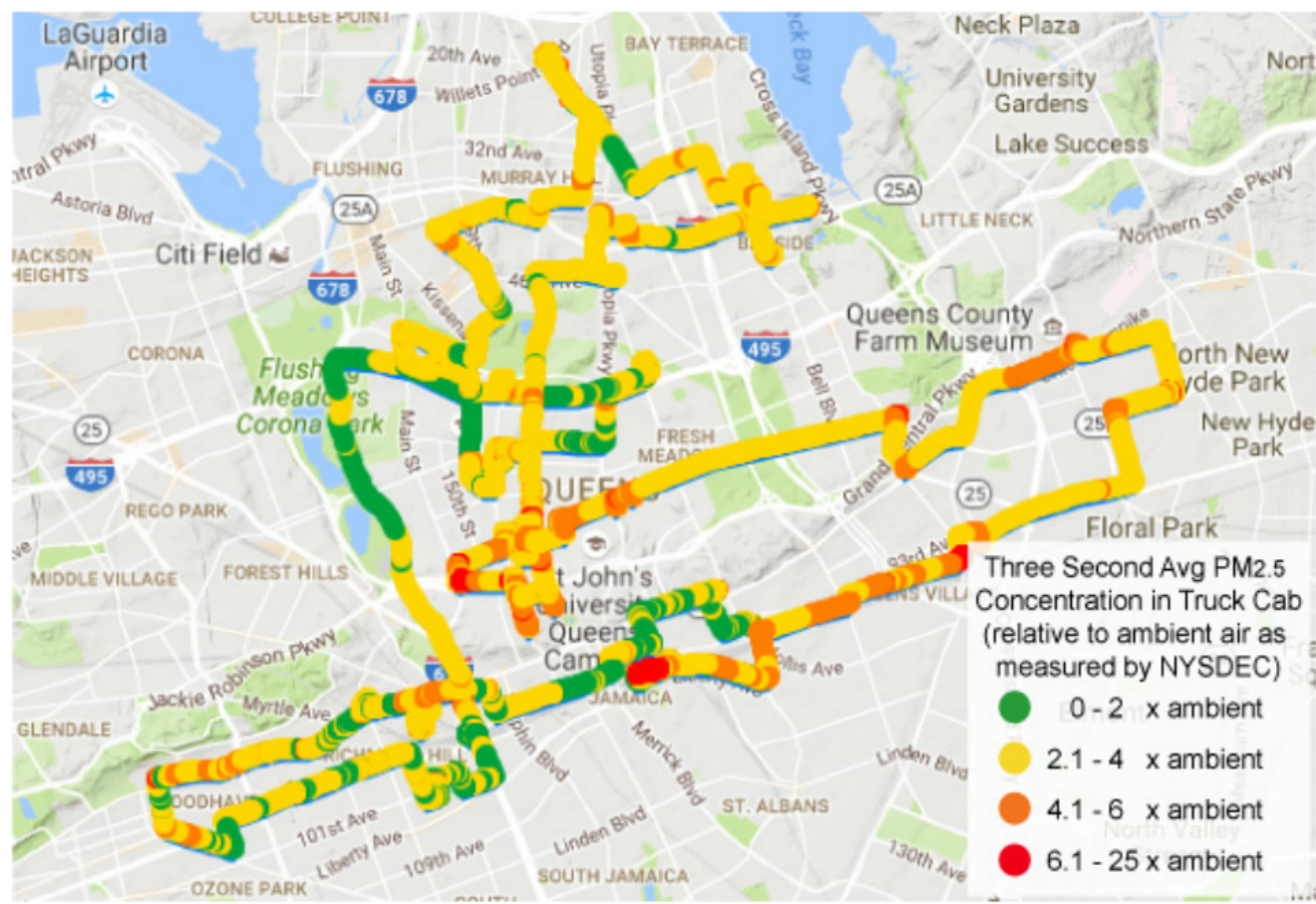
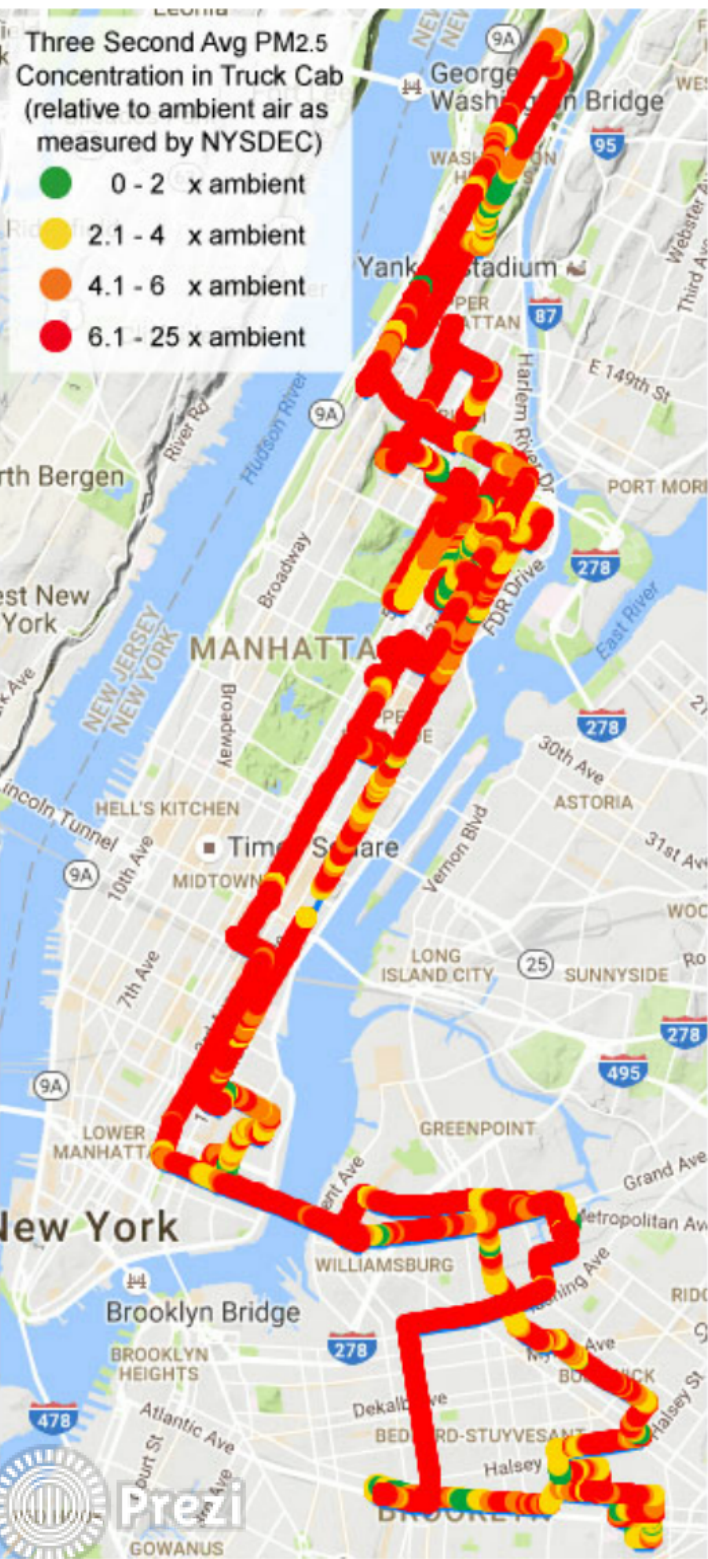
Asthma-inducing pollutants
inside private waste trucks are
up to



7x higher
in traffic
compared to out of traffic







info@habitatmap.org

habitatmap.org

aircasting.org

takingspace.org

twitter.com/habitatmap