



AB 617 OVERVIEW AND TIMELINE

SOUTH LOS ANGELES CSC MEETING #2
MAY 6, 2021

Martha Dina Aruguello
Executive Director, PSR-LA

1



ASSEMBLY BILL (AB) 617

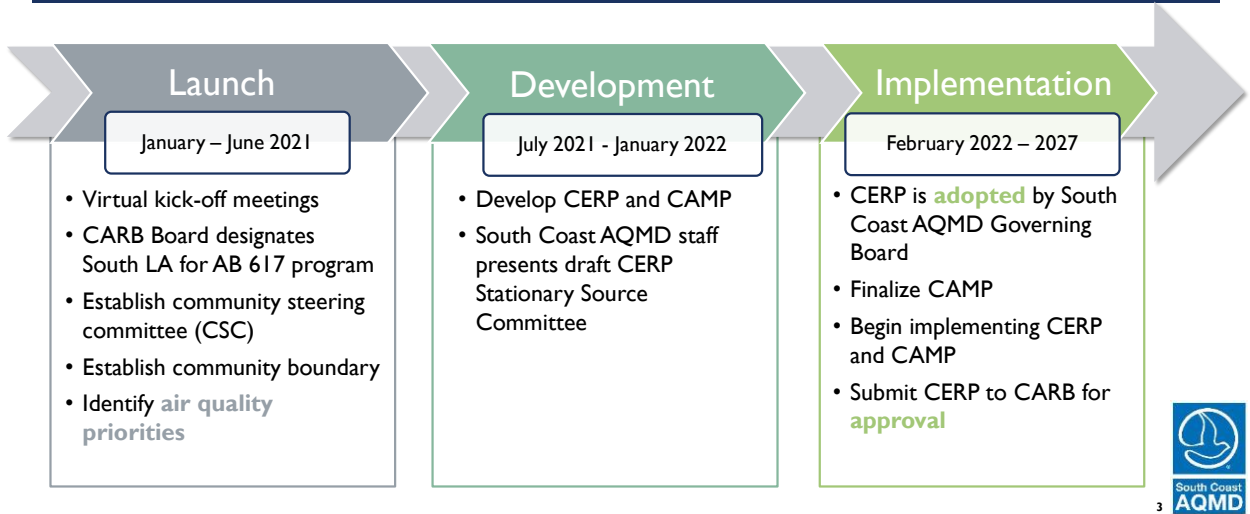
- Signed into law July 26, 2017
- Requires a strategy to reduce toxic air contaminants and criteria pollutants in disadvantaged communities
- Requires air districts to develop a Community Emissions Reduction Plan (CERP) and Community Air Monitoring Plan (CAMP) within one year from designation*

*Health and Safety Code §44391.2 (c)(2) and §42705.5(d)



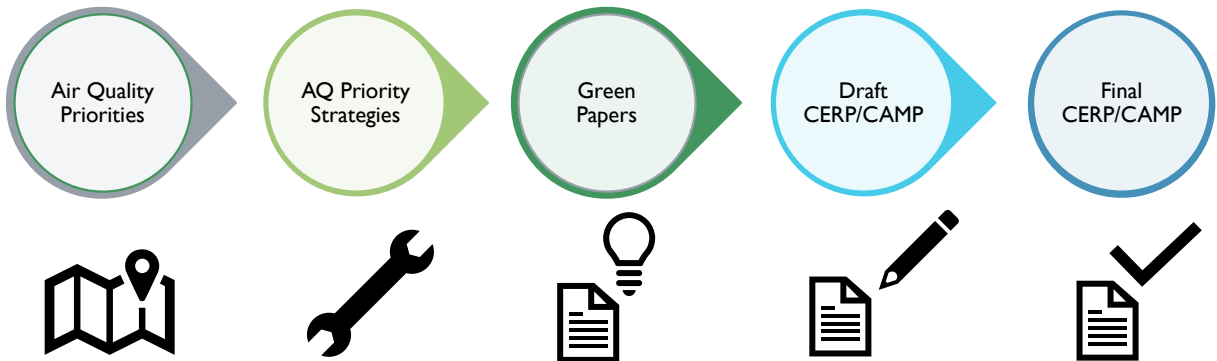
2

CERP AND CAMP DEVELOPMENT PROCESS



3

NEXT STEPS – CERP AND CAMP DEVELOPMENT

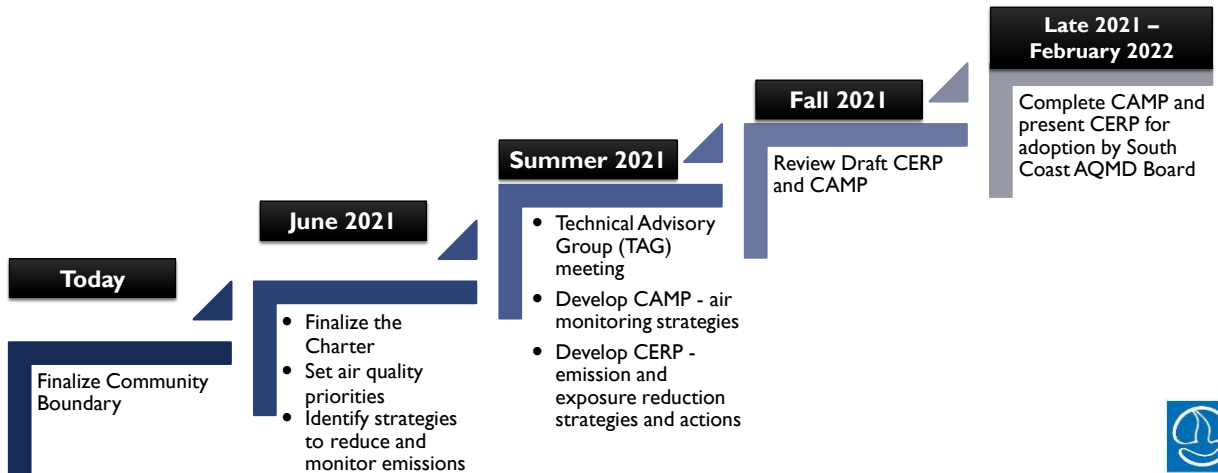


CSC discussion and input will guide every step in the process



4

ESTIMATED TIMELINE FOR CERP AND CAMP DEVELOPMENT



5

DRAFT CSC CHARTER

- Establishes rules and policies for proceedings led by the community co-leads including community-based organizations, environmental justice leaders and the local air district
- Comments on draft Charter due to the co-leads by 5/19/2021



6

PROPOSED COMMUNITY BOUNDARY

SOUTH LOS ANGELES CSC MEETING #2
MAY 6, 2021



Nicole Silva
Program Supervisor



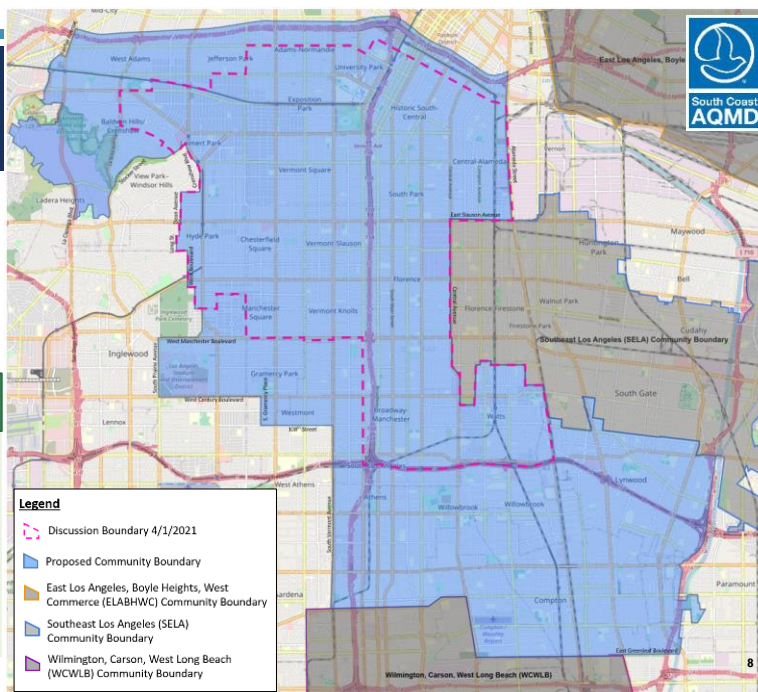
7

PROPOSED COMMUNITY BOUNDARY

The area within South Los Angeles where CARB and South Coast AQMD will work with community members to develop measures that reduce air pollution

Proposed Additions

- Compton
- Lynwood
- Gramercy Park
- Willowbrook
- Inglewood Oil Fields
- Main streets around SoFi Stadium



8

CSC DISCUSSION

Comments or Questions?



9

SOUTH COAST AQMD CONTACTS: SLA



- CERP
Nicole Silva
Program Supervisor
nsilva@aqmd.gov
909-396-3384
- CSC
Evangelina Barrera
Sr. Public Information
Specialist
ebarrera@aqmd.gov
909-396-2583
- CAMP
Payam Pakbin
Program Supervisor
ppakbin@aqmd.gov
909-396-2122
- CAMP
Angela Haar
Principal AQ Chemist
ahaar@aqmd.gov
909-396-2518



10

South Los Angeles Project to Understand the Sources and Health Impacts of Local Air Pollution (SCLA-PUSH)

Paula Torrado Plazas, Physicians for Social Responsibility - Los Angeles
Gina Charusombat, Strategic Concepts in Organizing and Policy Education



11

11

Speakers



Gina Charusombat
Strategic Concepts in
Organizing and Policy
Education (SCOPE)

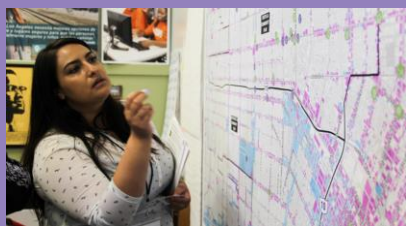


Paula Torrado,
Air & Toxics Policy Analyst
SCLA-PUSH Project Manager
Physicians for Social
Responsibility - LA

12

12

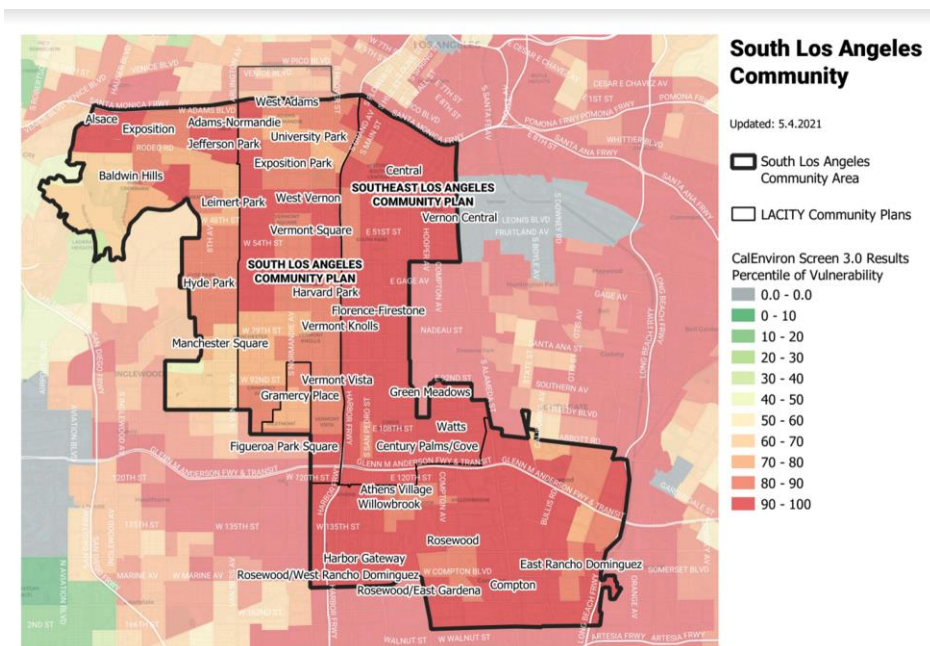
Part 1: Project Motivation - Pollution Burden in South LA



13

13

Context of Pollution Burden



14

14

Sources of Air Pollution



15

15

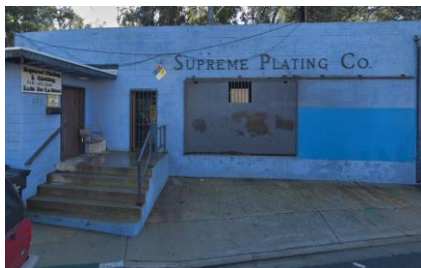
What's Up With the Air in South Central LA?



16

16

Pollution Burden South Central Los Angeles



17

17

Part 2: Who is SCLA-PUSH ?



Community - Academic Partnerships



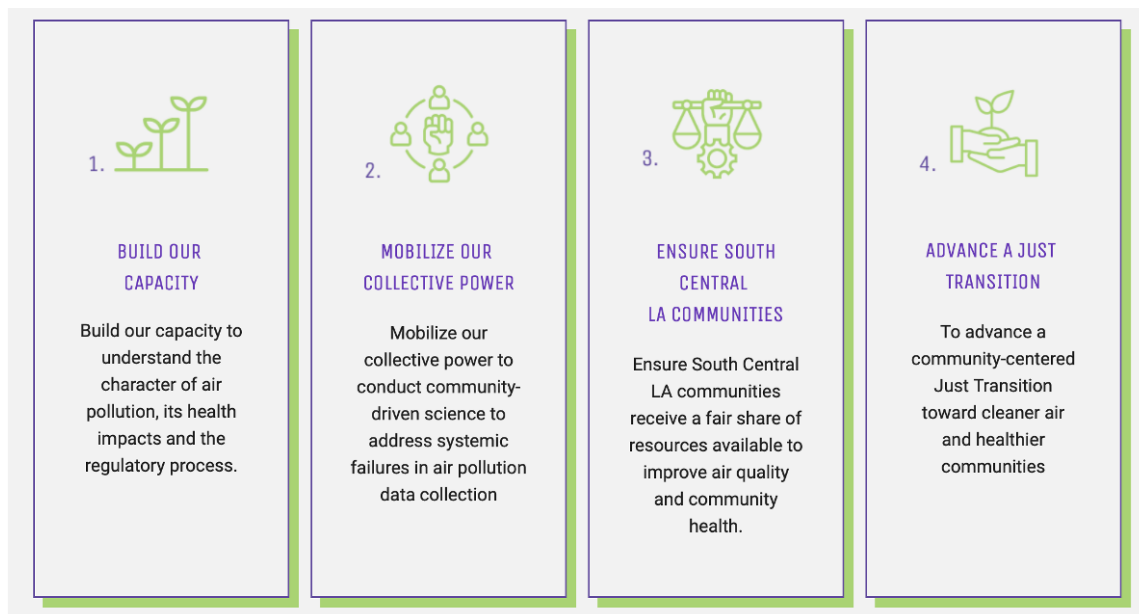
USC



18

18

What are the project goals?



19

19

The Approach



- Aim to build capacity, environmental health literacy and inform policy
- Grounded in community's local expertise and lived experience
- Uses participatory air monitoring together with groundtruthing
- Language justice framework



Air Quality Academies



Mapping Workshops



Community Walks

20

20

South Central LA - Air Quality Academy



21

21

Building Capacity - Air Quality Ambassadors



THE AIR QUALITY AMBASSADOR

A DEEPER DIVE INTO AB 617



The *Air Quality Ambassador* is charged with fostering, protecting, and preserving the rights of the community to breathe clean air and live in areas free of toxic exposure. The *Air Quality Ambassador* is a keeper of the community's voices and translates community wisdom into positive health outcomes by being an agent of change in policy and regulatory decision-making spaces.

THE COMMUNITY RESEARCHER

MOVING BEYOND MONITORING



The *Community Researcher* is a resident who shares personal experience of overexposure to air pollution and meaningfully represents the community by participating in crucial research that identifies key air pollution monitoring issues and persistent health inequalities. The *Community Researcher* designs, interprets air quality data, and identifies culturally appropriate solutions to improve air quality.

THE RADICAL SCIENTIST

CONNECTING THE AIR QUALITY DOTS



The *Radical Scientist* elevates the community's interests through research. Radical Scientists understand that science is for the people and not for industrial profits. The *Radical Scientist* revolutionizes science by incorporating qualitative data on daily stressors and quality of life issues into applied research and subsequent policy solutions.

THE CREATIVE MAPPER

POWER OF MAPPING IN TELLING COMMUNITY STORIES



The *Creative Mapper* deeply understands the community's treasures and challenges, both historically and geographically. A *Creative Mapper* carefully translates the voices and experiences of community. The *Creative Mapper* is able to tell compelling stories through maps that can support research and policy decision-making.

22

22

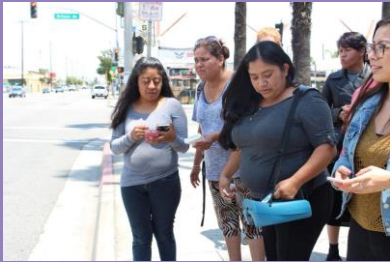
Ground Truthing - Neighborhood Air Quality



23

23

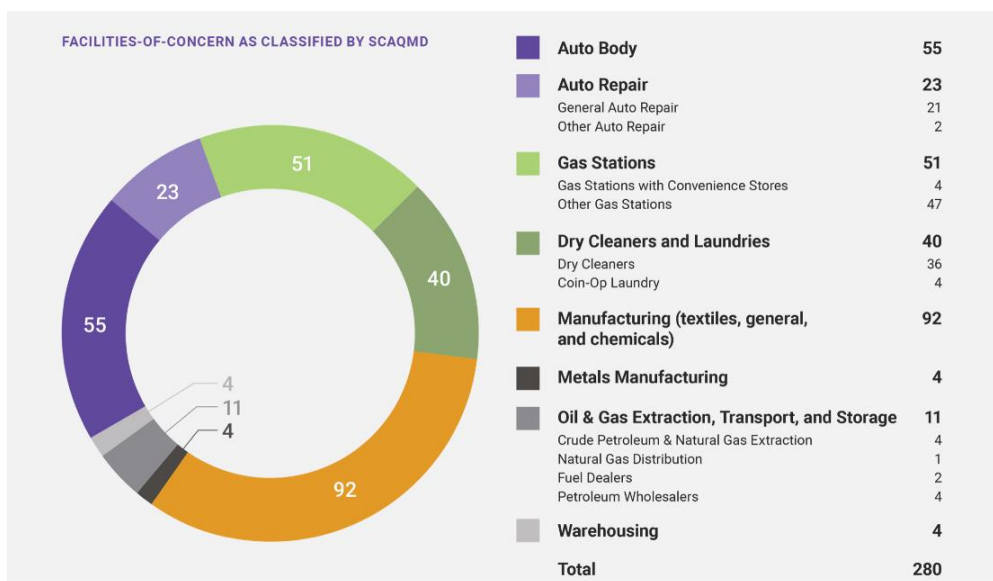
Part 3: Key Community Findings



24

24

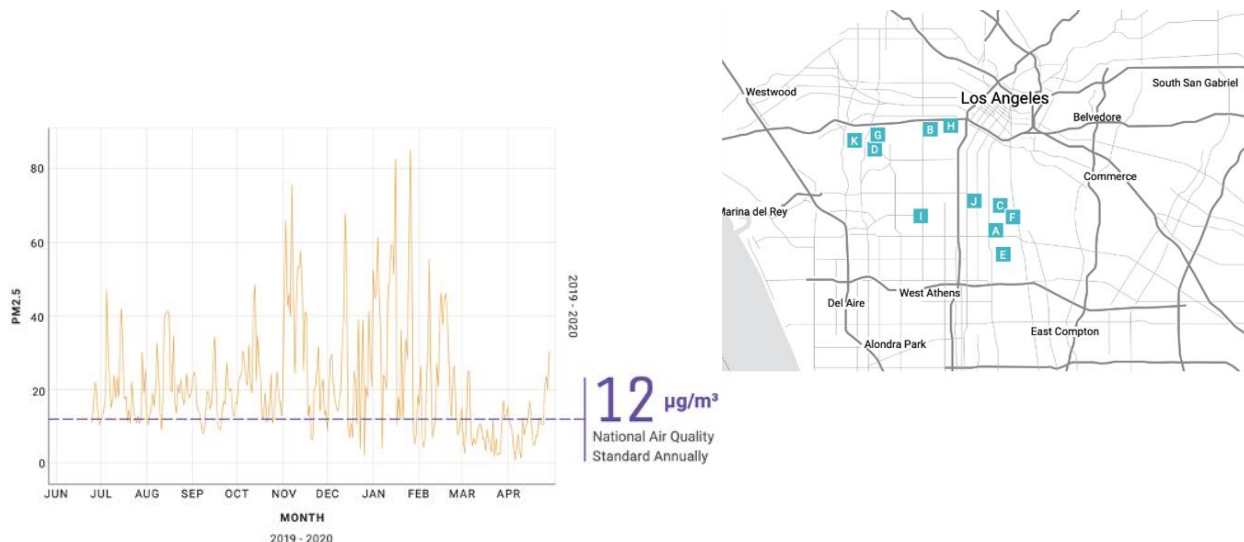
Industrial Land Use Profile in South Central LA



25

25

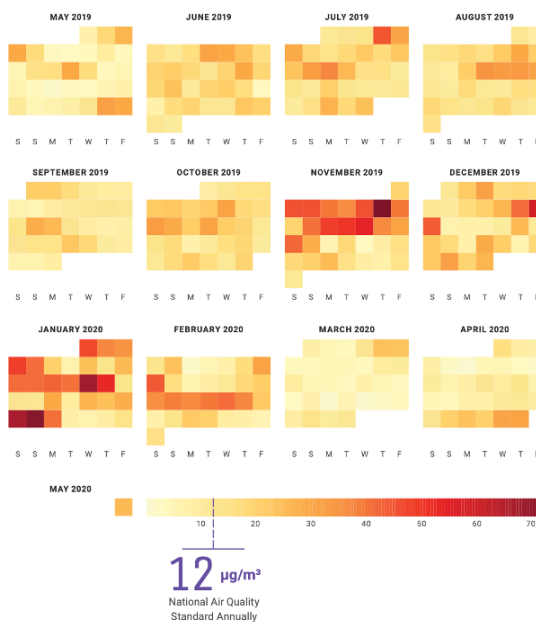
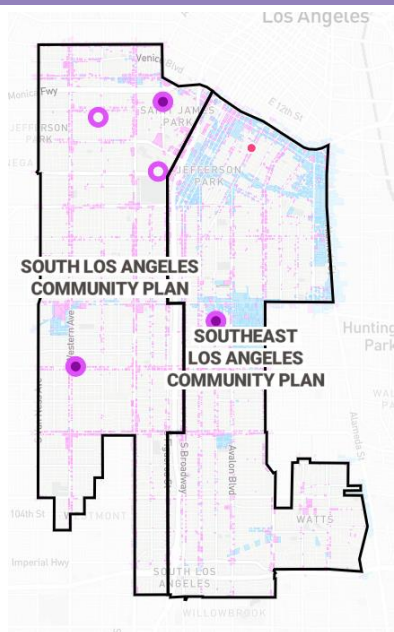
Community Air Monitoring: PM2.5



26

26

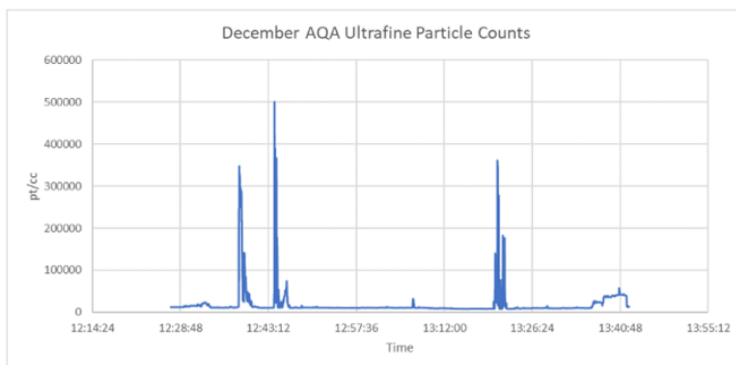
Community Air Monitoring: PM2.5



27

27

Measuring Diesel: Ultrafine Particle Counts



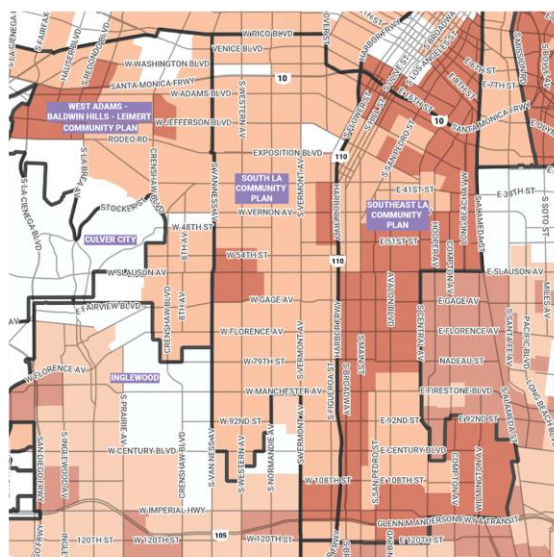
Ultrafine Particle Count for AQA 4

Area	Expected Concentration
Coastal air – near the beach	5,000 pt/cc
Indoor air – home or office	15,000 pt/cc
Outdoor air – near major streets	60,000 pt/cc
Freeway air – diesel truck spikes	300,000 – 600,000 pt/cc

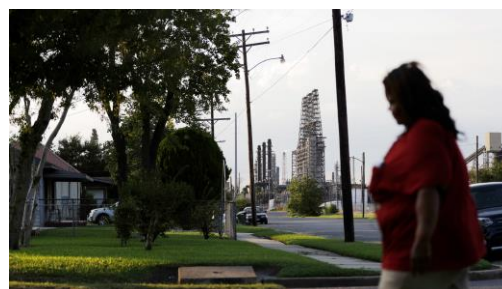
28

28

Cumulative Burden & Community Stressors



CalEnviroScreen Score **TOP 5%** **TOP 25%**



29

29

Part 4: Community Leadership & Successes



IRETHA WARMSLEY
FLORENCE & WESTERN

Iretha Warmasley: "Within 2 blocks we've ran into...auto shop, body shop, electric car repair shop all in the same area. We need to push, we need to fight, we deserve to breath clean air."



BLANCA LUCIO
WEST ADAMS

Blanca Lucio: "What i've learned from the Air Quality Academy is how to identify [industries] that are contaminating our air and why it is important...The oil wells have caused a lot of damage."

30

30

PART 5: Moving Towards Solutions



31

31

Thank you!



For more information:
 Paula Torrado
 ptorrado@psr-la.org;
 Gina Charusombat
 gcharusombat@scopela.org

www.sclapush.org



32

32