

AB 617 - SOUTH LOS ANGELES (SLA) COMMUNITY STEERING COMMITTEE MEETING



VIRTUAL MEETING

AUGUST 5, 2021

Language Justice Announcement

During the Event

SLOW DOWN

Facilitators, presenters, trainers, participants... anyone speaking during the event, **speak at a moderate pace**. Take a breath after each sentence, **take a pause** after switching speakers and asking questions. Slowing down supports **EVERYONE**, not just interpreters.



SPEAK-UP

Speak loud and clear! Ideally, using **headphones with a mic**. Interpreters need to be able to hear the speaker over the sound of their own voice when doing simultaneous interpretation.

SAY YOUR NAME EACH TIME YOU SPEAK

Folks listening to the interpretation might only hear the interpreters voice, so they will not notice when a new person is speaking.



ONE PERSON AT A TIME

Interpreters can only interpret for **one person at a time**, and they don't want to be put in the position of having to decide which voice to privilege over another.

LANGUAGE IS NOT A BARRIER

To the contrary, when we have multiple languages in a space, **we have multiple cosmovisions**, and multiple ways of understanding the world. We have the opportunity to expand and deepen our perspective, our imaginations, the possible strategies, tactics, and visions for what is possible.



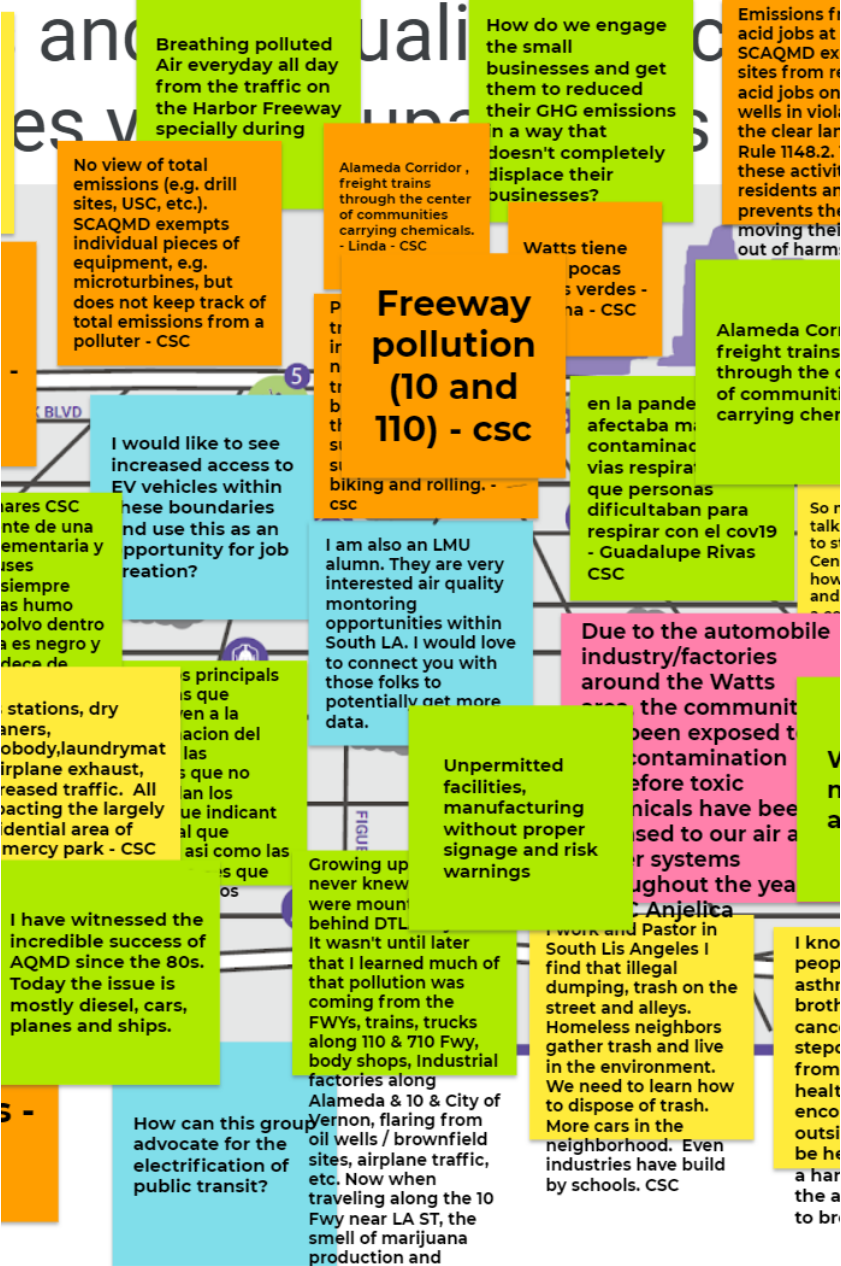


JULY MEETING RECAP

CSC MEETING SUMMARIES MAY BE FOUND [HERE](#)

JAMBOARD FOLLOW-UP

NICOLE SILVA
PROGRAM SUPERVISOR

EXAMPLE JAMBOARD CONCERNS



General Industrial*

- Jamboard Activity Discussion July 22, 2021
- Manufacturing, pallet businesses, warehouses, metal scrap yards



Mobile Sources*

- Jamboard Activity Discussion July 22, 2021
- Truck idling, school buses, trains, mobile source toxic emissions



Oil and Gas Industry*

- Jamboard Activity Discussion July 22, 2021
- Drill sites, CEQA review, land use issues, chemical and emissions reporting



Auto Body Shops*

- Jamboard Discussion August 5, 2021
- Focused inspections, paint content, educate small businesses



Toxic Metals*

- Jamboard Discussion August 5, 2021
- Increased air monitoring, hexavalent chromium, chrome platers

*The air quality priorities will be determined by the Community Steering Committee (CSC)

JAMBOARD ACTIVITY

- Purpose
 - To hear the CSC's concerns about air quality in SLA
- How will we use this information?
 - To finalize the air quality priorities and guide CSC meeting topics, meeting materials and community plan development
- How to participate?
 - Visit: https://jamboard.google.com/d/18oTJ_gyjkON-IIP9EzZhLLkf7UI47LwYH32hHgnKlaw/edit?usp=sharing
 - Include your name on each entry
 - Link will close August 5, 2021 at 6 p.m.





FINALIZING AIR QUALITY PRIORITIES

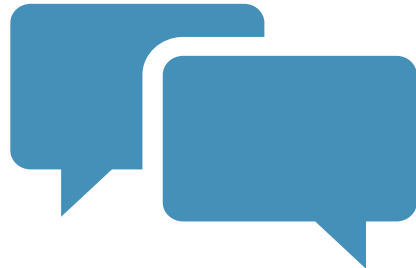
NICOLE SILVA

PROGRAM SUPERVISOR



AIR QUALITY PRIORITIES

- Proposed air quality priorities based on CSC input (e.g., Jamboard)
- CSC comments, questions, concerns or objections?



General Industrial



Mobile Sources



Oil and Gas Industry



Auto Body Shops



Toxic Metals

COMMUNITY EMISSIONS REDUCTION PLAN STRATEGIES

Rules and Regulations

- Evaluate opportunities for rule amendments or new rules to address CSC air quality concerns

Focused Enforcement

- Conduct focused enforcement based on CSC air quality concerns (e.g., truck and bus idling)

Air Monitoring

- Conducted air monitoring measurements in the community to support CERP implementation

Collaborations

- Work with other agencies to address concerns that indirectly impact air quality, but air districts have no or limited authorities to act (e.g., land use)

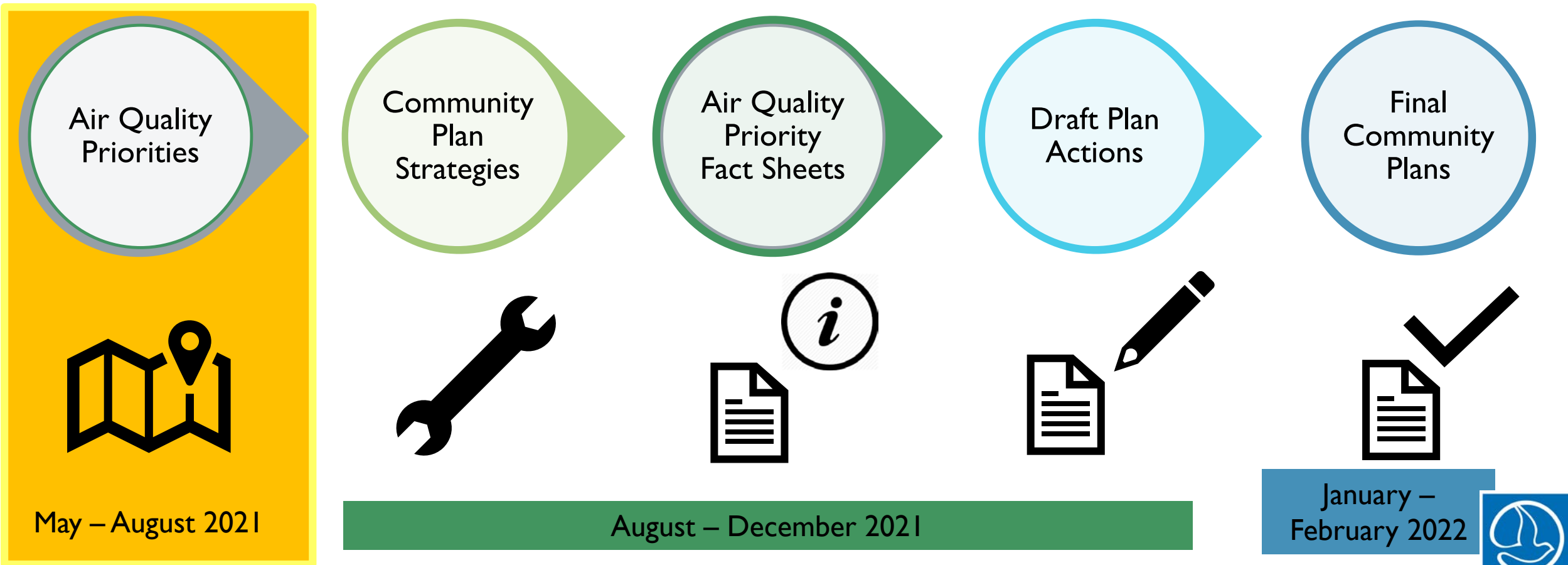
Incentives

- Identify funding opportunities to reduce emissions or exposure in the community for air quality priorities identified

Public Information and Outreach

- Identify focused outreach strategies to address air quality concerns in the community

PLAN DEVELOPMENT TIMELINE



CSC discussion and input will guide every step in the process

SOUTH COAST AQMD CONTACTS: SLA



- CERP

Nicole Silva
Program Supervisor
nsilva@aqmd.gov
909-396-3384

- CSC

Evangelina Barrera
Sr. Public Information
Specialist
ebarrera@aqmd.gov
909-396-2583

- CAMP

Payam Pakbin
Program Supervisor
ppakbin@aqmd.gov
909-396-2122

- CAMP

Angela Haar
Principal AQ Chemist
ahaar@aqmd.gov
909-396-2518



AIR QUALITY PRIORITY SUBCOMMITTEES



BREAK
(8 MINUTES)



South Los Angeles Mobile Sources

CARB's Authority

FEDERAL



US EPA

Sets & enforces national air quality standards.
Regulates interstate transportation.



Trains



Planes



Ships

STATE



Regulates mobile sources of air pollution,
greenhouse gases & consumer products.



Cars



Trucks



Buses

LOCAL



Local Air Districts

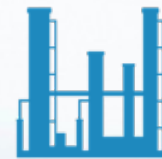
Regulates stationary & local
sources of air pollution.



Fireplaces



Factories



Refineries



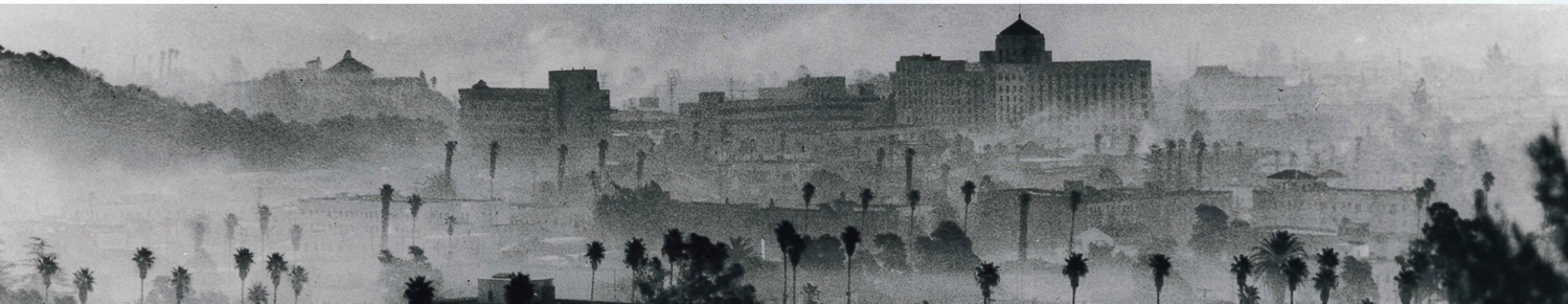
Power plants

Los Angeles, 1957



Los Angeles, 1960s

- Unhealthy levels of lead, nitrogen dioxide (NO₂), sulfur dioxide (SO₂), carbon monoxide (CO), ozone (O₃), particulate matter (PM), and air toxics
- Los Angeles:
 - Over 100 air pollution alerts annually
 - Over 200 days with unhealthy air annually
 - 49 parts per hundred million (pphm) one hour peak ozone level, five times the allowable level



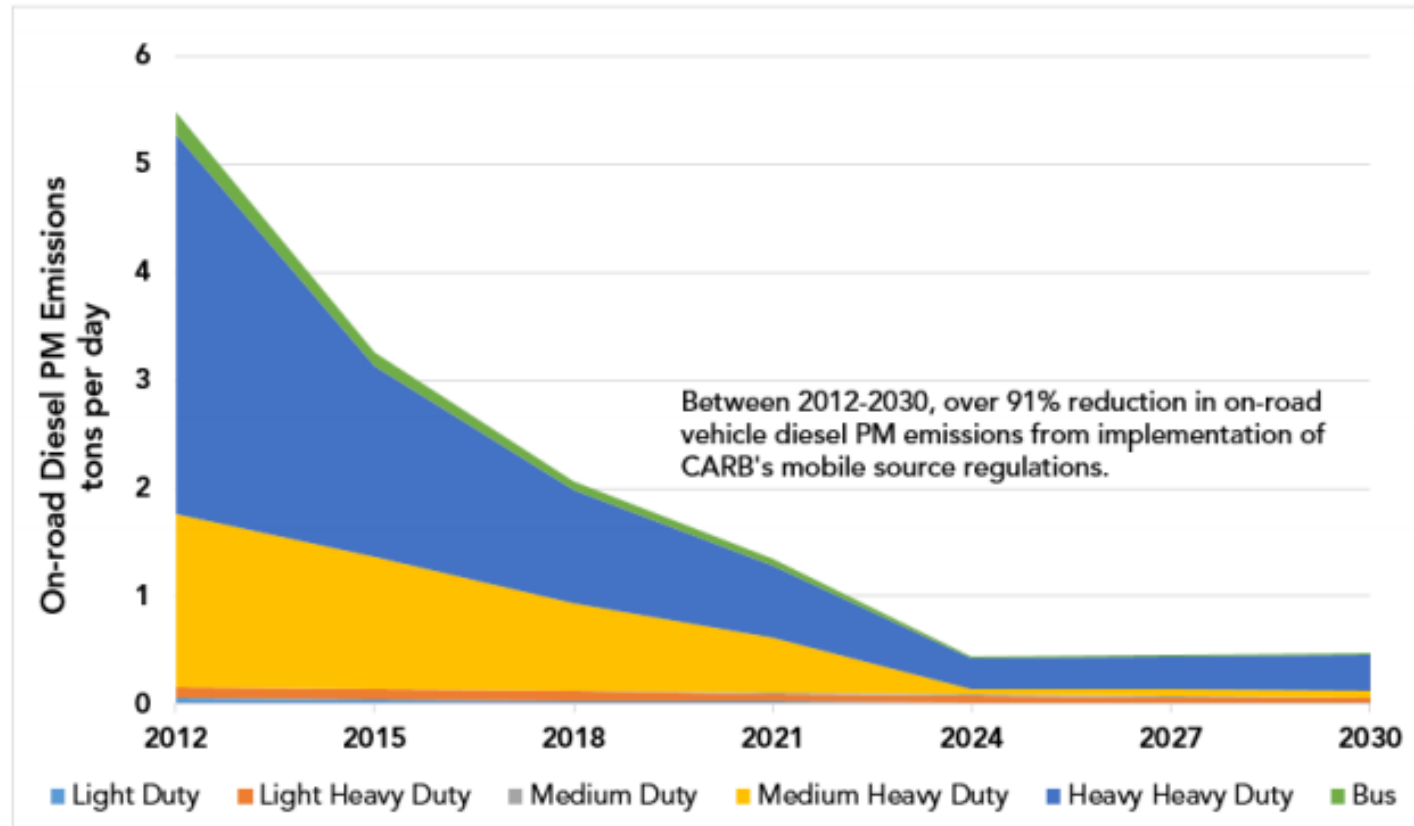
Los Angeles, Today

- NO_2 , SO_2 , and CO: Attained National Standards
- Ozone (nonattainment):
 - Los Angeles peak cut over 60%
 - Hours of exposure reduced 90%
- PM_{10} : Annual levels cut in half (nonattainment)
- Toxics: Nearly 50% risk reduction



Projected Emission Trends

Figure 30. Projected Emission Trends for On-road Vehicle Diesel PM in the South Coast Air Basin (Emissions in Tons per Day) ⁸⁷



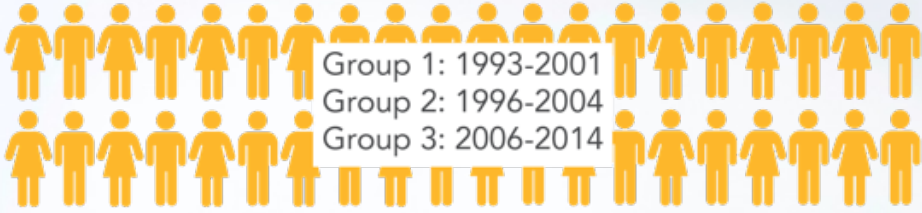
Cleaner Air = Fewer Symptoms

USC Children's Health Study

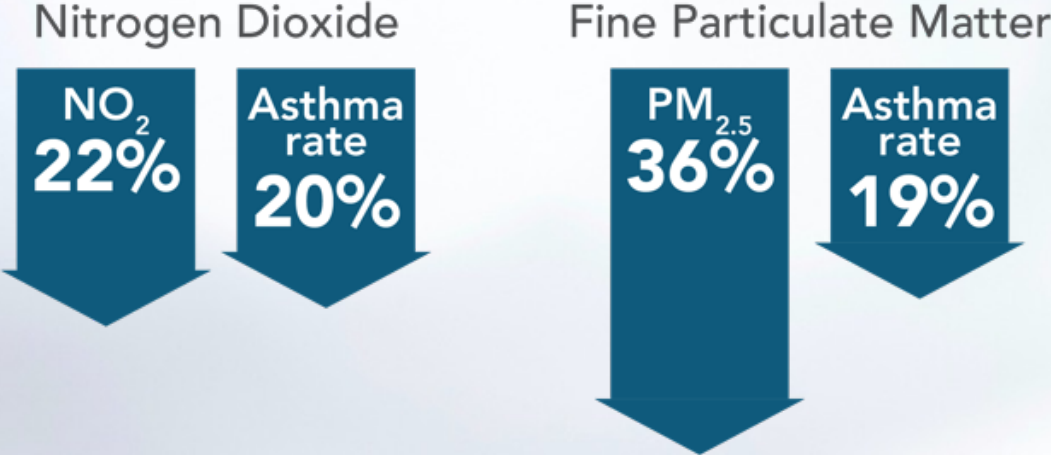
9 SOUTHERN CALIFORNIA COMMUNITIES



4,140 CHILDREN



FINDINGS



Mobile Sources of Concern



Diesel Trucks



Buses



Automobiles



Off-Road
Equipment



Planes/Airports



Locomotives

Recent Regulatory Examples

Measure	Timeline	Trucks	Buses	Autos	Off-Road Equipment	Planes / Airports	Trains/ Rail Yards
Advanced Clean Cars I	2012			X			
Advanced Clean Truck Regulation	Jun 2020	X					
CARB Locomotive Emission Standards Petition to U.S. EPA for Rulemaking	Apr 2017						X
Drayage Truck Regulation	Dec 2007	X					X
Heavy-Duty Omnibus Regulation	Aug 2020	X					
In-Use Off Road Diesel-Fueled Fleets Regulation Overview	Jul 2007				X		
Innovative Clean Transit Regulation	Dec 2018		X				
Truck and Bus Regulation	Dec 2008	X	X				
Zero-Emission Airport Shuttle Bus Regulation	Jun 2019		X			X	

Future Measures

Measure	Timeline	Trucks	Buses	Autos	Off-Road Equipment	Planes / Airports	Trains/ Rail Yards
Advanced Clean Cars 2	2022			X			
Advanced Clean Fleets	2022	X	X				
Cargo Handling Equipment Regulation	2023	X			X		X
Drayage Trucks at Seaports and Rail Yards	2021	X					X
In-Use Locomotive Regulation	Apr 2022						X
Transport Refrigeration Unit Regulation	Early 2022	X				X	X

Example CERP Strategies



Conduct PEAQS study



Targeted enforcement of
CARB regulations /
Outreach of CARB
regulations



Targeted incentives

CERP Tools

CARB - Community Resource Center

- https://ww2.arb.ca.gov/ocap_resource_center

CARB – Enforcement Data Visualization System (EDVS)

- <https://webmaps.arb.ca.gov/edvs/>

CARB - Technology Clearinghouse

- <https://ww2.arb.ca.gov/our-work/programs/technology-clearinghouse>

CARB - AQview

- <https://ww2.arb.ca.gov/community-air-quality-portal>

CARB - CommunityHub

- <https://ww2.arb.ca.gov/capp-communities>

OEHHA – CalEnviroScreen (CES) 3.0 and 4.0

- <https://oehha.ca.gov/calenviroscreen>

South Coast AQMD – Facility Information Detail (FIND)

- <https://www.aqmd.gov/nav/FIND>

PUBLIC COMMENT