

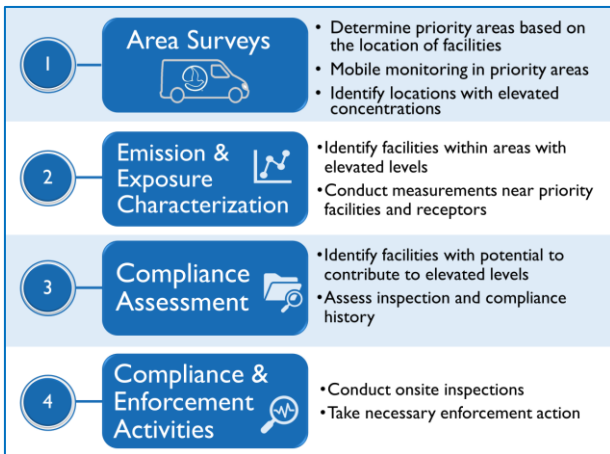


Metal Processing Facilities Monitoring

Monitoring & Analysis Division

Metal processing facilities are important sources of particulate metals and were identified as an air quality priority in the East Los Angeles, Boyle Heights, West Commerce (ELABHWC), Southeast Los Angeles (SELA), and South Los Angeles (SLA) communities.

Working very closely with Community Steering Committee (CSC), South Coast AQMD staff developed a Community Emissions Reduction Plan (CERP) and Community Air Monitoring Plan (CAMP) strategy to address this air quality concern. This strategy requires the Monitoring and Analysis Division (MAD) and the Office of Compliance and Enforcement (OCE) to use air monitoring data to guide enforcement actions and achieve emission reductions.

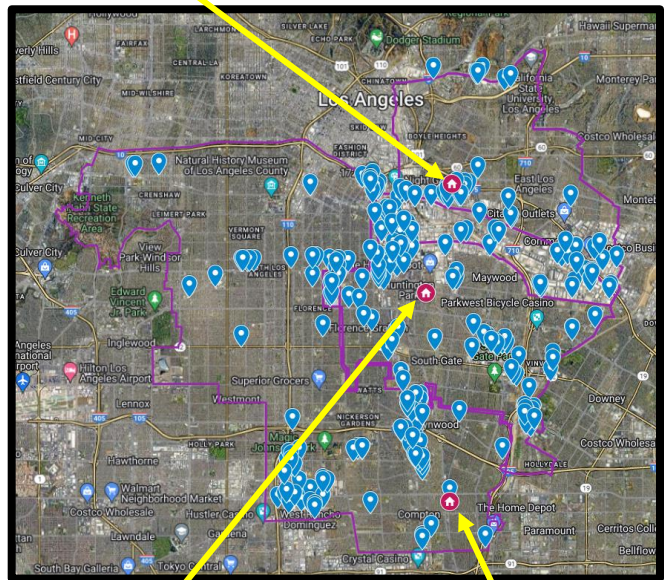


MAD staff developed a novel multi-metals mobile platform to support the implementation of CAMPs in ELABHWC, SELA, and SLA communities.



Resurrection Church
Air Monitoring Station
(ELABHWC)

Continuous measurements
of multi-metals in PM10
March 2022 to December 2023



Huntington Park
Air Monitoring Station
(SELA)

Continuous measurements
of multi-metals in PM10
August 2022 to Present



Compton
Air Monitoring Station
(SLA)

Continuous measurements
of multi-metals in PM10
August 2023 to Present

